

Discovery EXPRESS



Vol. 10, No. 4

Celebrating DOAI's Tenth Anniversary

Fall 2008

In This Issue

Membership Sponsors	2
Equity Life Style Properties Ad	2
www.queenmotorhome.com Ad	2
President's Message	3
Get Three, Earn One	3
2009 SE Region Rally Information	4
Treasurer's Report	5
DOAI Badge	5
Discovery Dealers!	5
Welcome, New Members	6
Thoughts & Prayers	6
Attention, New Members!	6
Region Reports:	
Southeast Region	7
North Central Region	7
South Central Region	7
Southwest Region	7
Northwest Region	8
National Rally Master's Report	8
Rally Opportunities	9
RV Quick Shades Ad	9
Helpful Contact Information	9
DOAI Chapters/Presidents	10
DOAI Committee Chairmen	10
Chapter Reports:	
Texas Disco Road Runners	11
Quad-LATO	11
Mason-Dixon Discoverys	11
Louisiana Mudbugs	12
Heartland Discoverys	12
Discovery Texans	12
Discovery Pioneers	12
Desert Rats	13
Blue Ridge Discoverys	13
Computer Corner	14
Basic Computer Lessons	14
2009 Discovery Models Unveiled	15
Highway Slam Bang for Hallums	16
A Cooking Tip	16
Fleetwood Tech Information	17
RV Safety	18
Silent Auction Goes to Dogs	19
Items for Sale	21
SE Region Rally Reg. Form	22
SE Region Photo Album	23
Membership Form	23

Southeast Region Plans 2009 Rally



The Blue Ridge Discoverys chapter will be your host for the 2009 Southeast region rally, **Discover The Smokies**, to be held at River Plantation RV Park, Sevierville, Tennessee, **April 20-26, 2009**.

The lovely park offers the perfect blend of southern hospitality, first-rate facilities, and services to provide the very best of RV resort life.

Here and on **pages 4 and 23** are a few enticements to help you decide to load up your Discovery next

Spring and head to Tennessee (**registration deadline January 30, 2009 – see page 22**).

Enjoy the Best of the Smokies

Entertainment and shopping abound. The Great Smoky Mountains National Park is the most visited national park in the country, beating even Yellowstone and the Grand Canyon.

Straddling the border between North Carolina and Tennessee, the park offers a world-renowned natural landscape with endless forests, an awe-inspiring diversity of plants and animal life, and the quiet beauty of the ancient mountains towering above.

From the largest Tanger Outlet Mall in Tennessee to world class entertainment, your choices are unlimited. With Dollywood just down the road in Pigeon Forge, and Ripley's 1.4-million-gallon aquarium in Gatlinburg, there is something for everyone. Other activities to enjoy include:



- 🎵 Golf
- 🎵 Mountain hiking
- 🎵 Tennessee Museum of Aviation
- 🎵 Forbidden Caverns
- 🎵 Floyd Garrett's Muscle Car Museum
- 🎵 Cades Cove
- 🎵 Flea Traders Paradise Flea Market

Registration fee includes a welcome party, two continental breakfasts, three evening meals, live entertainment, various seminars, and vendor presentations.

Now turn to **pages 4 and 23** for lots more information! → → → →



Quarterly Publication of Discovery Owners Association, Inc.,
an organization by and for owners of Discovery by Fleetwood® RV Motor Homes.

DISCOVER THE VERY BEST LIFE HAS TO OFFER

DOAI Membership Sponsors

We extend thanks to these Discovery dealers who support DOAI by paying for a year's membership for each person who purchases a new or used Discovery motor home.

Ancira Motorhomes, Inc., Boerne TX	800.299.1199	www.ancirarv.com
Bankston Motor Homes, Inc., Huntsville AL	800.624.2899	www.bankstonmotorhomes.com
Beaudry RV, Tucson AZ	888.849.6887	www.beaudryrv.com
Beaudry RV, Phoenix AZ	888.849.6887	www.beaudryrv.com
DeMontrond RV, Houston TX	800.392.1480	www.demontrondrv.com
K&C RV Centers LLC, Longmont CO	877.632.5278	www.kcrv.com
Lazydays RV SuperCenter, Seffner FL	800.500.5299	www.lazydays.com
PPL Motor Homes, Houston TX	800.755.4775	www.pplmotorhomes.com
RCD Sales Company, Ltd., Hebron OH	888.204.4094	www.rcdsales.com
River City RV, Sherwood AR	800.696.2125	www.rivercityrvs.com
RV World Recreational Vehicle Center, Yuma AZ	800.762.7448	www.rvworldyuma.com
Tom Raper RV, Richmond IN	800.727.3778	www.tomraper.com
Tom Raper RV, Fairfield OH	800.727.3778	www.tomraper.com

DOAI and Discovery dealers – sharing the spirit of friendship!

**If you would like to join this elite group,
please contact DOAI Membership Director Portia Williams at 888.594.6818**

Stay 3 Nights for the Price of 2

at any of our Florida RV Resorts!

Choose from
any of our 29
Florida resorts!

Our resorts are located in Florida's best vacation destinations and feature resort-style amenities, on-site activities, planned events, and so much more.



Call 877.362.6736 or visit www.RVontheGo.com
today to make your reservations!

Equity Lifestyle Properties
www.EquityLifestyle.com


www.RVontheGo.com

Based on availability. Valid on standard RV sites only. Based on two persons per site. Reservations are required. Not valid during holidays and/or special events. Cannot be combined with any other offer. Some restrictions may apply. Stay of 30 days or less are subject to a \$3 per day resort fee. Offer expires June 30, 2009. Sales tax may apply. Please mention promo code DiscExp08 when making reservations.



JUST RELEASED

A great new RV read!
www.queenmotorhome.com
A novel by Patt Fero, Author
Go to Web site for more
information and to order!



President's Message by Marshall Godwin

Although I am writing this article several weeks before the national rally, you will receive the newsletter after the rally. I thank, in advance, all those who worked so hard to plan and conduct this tenth anniversary rally. If the final result reflects your effort and time, it will be perhaps the best rally we have ever had. Thank you!



Natl Pres Marshall

Chapters Are Friendship-Building

As the weather cools and the leaves begin to change, this time of the year is a great time to attend a local chapter rally. Check the rally schedule on page 9 and join in with those in your area or a chapter gathering along the route you are traveling. A nice campfire on a cool fall night makes for a perfect way to end a day spent with friends who share the common bond of RVing in a Discovery.

Caring for One Another

Our association is a lot more like family than some much larger RV groups. In that regard, we need to be extra considerate of each other, especially when using an impersonal medium like email. Folks can easily write things in email that they would be more hesitant to say in person. Our Yahoo! Group and DOAI bulletin board are two primary benefits of DOAI membership. Let's be more careful to keep the topics to those related to the RV lifestyle and be less critical of one another when responding to others. Disagreeing with someone in an agreeable manner is an art to be practiced.

Heading Toward an Election Year

We will be holding elections for national officers and region vice presidents this time next year. As is often the case, you get more out of an organization when you put in more. It is not too early to consider running for a position on the DOAI board or encouraging someone else to run. We have many wonderfully talented and dedicated members in DOAI who are well qualified to lead this organization. Please choose to participate and make a difference.

Traveling In Spite of Diesel Prices

The high cost of fuel impacts the cost of almost everything else. It truly touches most everything in our economy. Fuel costs may require you to be more selective in how often and how far you travel. I do believe, when you consider the total cost of RV ownership, fuel has less impact than you might expect. That's one reason Becky and I are tentatively planning to visit Alaska next summer. I figure we aren't getting any younger, and fuel won't get any cheaper, so now is the time.

Welcome New Members

Welcome to our new members. Thank you for joining DOAI. Now that you are part of the association, it's our responsibility to make sure your membership adds sufficient value so that you renew your dues each year. Let us know where we can improve and give us a chance to do so.

Take care and God bless. ❖

Get Three, Earn One

The headline says it all ... get three Discovery owners to join DOAI, and you will earn yourself a free year of membership. It's easy; if you're in a park or parking lot, and you see a Discovery, don't be afraid to knock on their door and ask if they are DOAI members. If they are, you can exchange comments about how valuable membership can be. If not, you can tell them about this wonderful group of wanderers. Need brochures to pass out? Contact your region vice president for a supply (see page 10 for address). Need a few extra newsletters to pass out? Contact the membership director for a supply (see sidebar on this page).

And Now the Good Part!

Congratulations to **Lonnie and Clara Johnson**, who have just earned a free year of membership! ❖

© 2008 Discovery Owners Association, Inc.

Discovery Owners Association, Inc. is not responsible for opinions or facts presented by contributors in this newsletter.

Discovery Express is a quarterly publication (Winter, Spring, Summer, Fall). Deadline for copy is November 20, February 20, May 20, and August 20. Members are encouraged to send in articles, tips, questions, and/or comments.

Material for the newsletter may be sent via email or U.S. mail. Photos are welcome, and if sent via email, should be in either .jpg or .bmp format. Photos sent by U.S. mail will be scanned and returned to contributors. All submissions will be acknowledged. If acknowledgment is not received within a reasonable time, please call the editor.

Newsletter Editor

Nina Soltwedel
4736 Harwich St.
Boulder CO 80301-4217
303.530.0775; 303.570.2736
doaiexpress@discoveryowners.com

Please contact DOAI membership director as soon as you change your address. Newsletters are costly to mail, and DOAI pays double when a newsletter is returned.

Membership Director

Portia Williams
P. O. Box 95
St. George UT 84771-0095
Toll-free 888.594.6818
doaimembership@discoveryowners.com

DOAI Web Site

www.discoveryowners.com

DOAI Yahoo! Group

www.groups.yahoo.com/
discoveryownersassociation/

Founder/President Emeritus

Jim Devine
122 Baltimore Dr
Oak Ridge TN 37830-7842
970.209.4757
f195810@earthlink.net

Newsletter printed by Preferred Printing, Boulder CO using post-consumer recycled paper and vegetable-based ink



2009 Southeast Region Rally Information by Frank Cason Entertainment

We have selected to use local talent for our entertainment. On Monday evening for the cookout we will have background music only. This gives everyone time to talk to old friends and to meet new ones.

Tuesday night we will have Greg Evans, who will provide music of the '50s, '60s, '70s, and gospel.

Thursday we have made arrangements for the Country Tonite show for a small fee of \$13.75 per person. It is a great show, see comments below.

Friday's entertainment is still being worked on.

Saturday night we will have Greg Johnson and his entertainers.

Country Tonite

Country Tonite Theatre in Pigeon Forge, Tennessee, is the best entertainment value in the Smokies! Experience this high-energy full-scale production located in a 1,500-seat multi-million dollar theatre. You're sure to understand why this spectacular show has won so many awards including *2001-2007 Show of the Year*, *Best Live Country Show in America* and *Best Show in the Smokies*. In its tenth year in Pigeon Forge, Country Tonite continues to provide the best in quality entertainment with singing, dancing, comedy, gospel, patriotic and more filling this two-hour show.



The Smokies



Waterfall on Blue Ridge Parkway

Bush Bean Factory

The Bush Bean factory is located in Chestnut Hills, Tennessee, a short distance from Sevierville. For more than 90 years, Bush Beans has been offering delicious Bush's products to families across the country. All of Bush's great-tasting beans and vegetables are grown right here in the United States. Bush's Best products are quality made to seal in the freshest flavor possible. For more information go to www.bushbeans.com. While there, visit Duke's doghouse. This is a great tour, one that I think you will like.



RV park entrance

Forbidden Caverns

See the beauty that's hidden beneath the Great Smoky Mountains – one of America's great natural attractions.

Ijams Nature Center

Ijams Nature Center is a member-supported non-profit environmental education center and 160-acre sanctuary. It is located in Knoxville, Tennessee, which is approximately a 45-minute drive from Sevierville.

Special Notes for Everyone

- ** Super Wal-Mart is located on the Parkway approximately one mile from the RV park.
- ** Free Wi-Fi is available at the park.
- ** Camping World is located on I-40, exit 398 (Tennessee RV). It is approximately 19 miles from the RV park.
- ** If you want to park together, you must come in together.
- ** After the parking committee has assisted you in parking, come to Conference Center to register on Monday after 1:00 p.m.
- ** Sevier county is dry – please provision appropriately. The closest ABC store is in Gatlinburg, which is 10 miles away.
- ** If you arrive prior to Saturday, April 19, you must call the RV park and make your own reservations for those nights. The park number is 800.758.5267.
- ** Check out the beautiful River Plantation RV Park at www.riverplantationrv.com

Local Tennessee Food Bank Assistance

The decorations committee came up with an idea to help a local food bank. We have selected Sevier County Food Ministries to be the recipient, so the slogan for this endeavor will be *Local Tennessee Food Bank WINS with DOAI Members*. We will be collecting dry or canned food items during the rally

to use as the centerpiece of each table. There will be four meals where we all gather as a group, so all you have to do is bring one food item for each meal and place it in a basket on the table. On Saturday night we will have someone from the food bank to accept all the food. ❖

Treasurer's Report

Balance Sheet as of July 27, 2008 by Micky Racer

Assets	
Checking	\$44,430
Money Market	2,368
1-Year CD	10,687
2-Year CD	10,703
3-Year CD	<u>10,655</u>
Total Bank Accounts	<u>\$78,843</u>
Other Assets	
Clothing Inventory	\$ 3,148
Membership Revolving Fund	550
PayPal Account	3,300
Rally Advance	<u>4,500</u>
Total Other Assets	<u>\$11,498</u>
Total Assets	<u>\$90,341</u>

Liabilities	Prepaid Membership	\$13,700
Total Liabilities		<u>\$13,700</u>
Net Worth		<u>\$76,641</u>

Note: Since previous report, all bills for 2008 Southeast region rally have been paid (approximately \$27,000). Expenses for 2008 national rally ongoing and outstanding at this time. The one-year CD is earmarked to cover any future rally losses. PayPal limits amount of funds we may transfer to our checking account monthly, and we are working to change this.

If you have questions about this report, please contact me. Safe travels! ❖



Treasurer Micky

DOAI Badge



Badge with pin back (with or without two holes)*	\$5.00
Badge with magnet back (with or without two holes)* ..	\$6.00
Bolo tie (specify black or white)	\$3.50
Job bar (for national officers/chairmen) with rings	\$3.50
Shipping one badge or job bar	\$1.50
Shipping two badges or job bars	\$2.00

**When you order your badge, be sure to specify if you want two holes in the bottom two corners (just in case you decide to serve the national organization in the future and will want a job ID bar). If you don't specify, the badge will come without corner holes. There is no extra charge for drilling the holes.*

To Order

1) Print out a list of what you are ordering; 2) Write a check for the total amount of the order; 3) Print your name(s); and 4) Print your ship-to address.

Send all items to: *The Sign Man, PO Box 622143, Oviedo FL 32762-2143* (telephone 407.365.3722). Orders take about two weeks from receipt of order to delivery of items.

Discovery Dealers

We Have Two
Sales Promotion Ideas
for You!

Participate in our DOAI *Membership Sponsor* program. Contact Membership Director Portia Williams (toll-free 888.594.6818 or via email at doaimembership@discoveryowners.com) for details.

Advertise your dealership in this newsletter. Contact Newsletter Editor Nina Soltwedel (303.570.2736 or via email at doalexpress@discoveryowners.com) for details.

*Membership sponsors
and advertisers
are featured
on the DOAI Web site,
in addition to this
newsletter.
You will be seen by
potential customers
all across North
America!
This is a win/win
situation!*

Welcome, New Members



We welcome our newest members. Be sure to extend the hand of welcome when you meet them.

Marshall/Judy Alexander, Klamath Falls OR
 Peter Stanley Amenowicz, Spring Hill FL
 Robert/Glenda Angus, Clarksville TN
 Michael/Carmine Anolfo, Bradenton FL
 Jerry Armijo, Albuquerque NM
 William/Karen Athey, Cumberland MD
 David Atwood, Vicksburg MS
 Roger/Pamela Barnes, Cumming GA
 Rick/Cathie Bergquist, Minnetrista MN
 Joe/Kathy Biviano, Little Mountain SC
 John/Mim Carpenter, Bend OR
 Jerry/Shirley Caviness, Winnsboro TX
 Chris/Pam Coats, Bremen GA
 Clay/Sherri Coleman, Rio Rancho NM
 Conrad/Charlotte Cooper, Beaumont TX
 Cliff/Kathy Damron, Denton TX
 Brian/Lorna Lee Davies, Sidney BC
 Carmela Davis, Longview TX
 Richard/Joan Emerich, Willow St PA
 David Flanagan, Hamilton OH
 K E Franks, Cleveland TX
 Larry Gallaher, West Chester OH
 Mike/Connie Ghosn, Murrieta CA
 John/Fran Greenan, Livingston TX

Robert Grout, Crosswell MI
 Charles Gruen, Westlake Village CA
 Tim/Cheri Hales, Murrieta CA
 Jim/Bonnie Hall, Linville NC
 Martin/Nancy Halwix, Marengo IL
 Odean/Denise Hefta, Gilbert AZ
 Henry/Maria Hrcirik, Lethbridge AB
 Dustin Irvin, Stinnett TX
 Victor King, Riversville WV
 Joe/Anna LaRocca, Vilonia AR
 Tony/Vi Lorenz, St. Albert AB
 Terry/Aleshia Lunsford, Morristown TN
 Ray/Paula Mair, Woodbury MN
 Charles/JoEllen Maley, Columbia City IN
 Mark/Debbie Mason, Selma AL
 Robert/Dawn Mastrorilli, Lewiston NY
 Louis Minardi, Tampa FL
 Ed/Pat Montgomery, Livingston TX
 Alan Parks, Friendswood TX
 Manuel Pasarin, Miami FL
 Jason/Sara Medford Perez, Seattle WA
 Bruce/Leslie Perry, Cornwall NY
 Alfred/Vanesa Phillips, New Iberia LA
 Don/Shannan Pittser, Erie CO
 Joel/Daphne Plotsky, Hawthorn Woods IL

David/Sandy Pottinger, Tucson AZ
 Willie/Ty Randall, Salisbury MD
 Robert/Nancy Ratay, Indiana PA
 Michael Saunders, Sayville NY
 Leon/Janet Schmura, Wyoming MN
 Larry/Deborah Schoening, Bend OR
 Eric/Peggy Seymour, Powell OH
 John Shaw, Brighton CO
 John/Debbie Slate, Mineral VA
 Al/Janet Smith, Roanoke TX
 Donna Smith, Clarendville NL
 Harry Stealey, Quakertown PA
 Don/Lynda Stockton, Village Mills TX
 Rob/Deborah Svalstad, El Cajon CA
 Richard/Paula Thiltgen, Spring TX
 Dan/Suzanne Thompson, Allen TX
 David/Beth Tillery, Springfield MO
 Michael/Sandy Toner, Harrison MI
 David/Sandy Tupper, Cincinnati OH
 Robert/Gerri Voss, Dalzell SC
 Jack/Mary Walters, Wake Forest NC
 Andrew Witkowski, Pittsburgh PA
 Bob/Mary Helen Yarbrough, Franklin TN
 Bob/Donna Zarb, Waterford MI



Please keep these members in your thoughts and prayers...

...**Annie Hixson**, who had abdominal surgery in July.

...**Howard and Jackie Kimball**, who have sold their Discovery due to ill health.

...**Linda Andrews**, hospitalized recently with pneumonia.

...**Logan and Linda Wheeler**, who have sold their D due to ill health.

...**Sheila Eck**, undergoing treatment for cancer.

...**Gloria Carroll**, whose husband, **Arnold**, died in June.

...**Dick Snyder**, whose sister died in July.

...**Howard Campbell**, whose sister died in July.

...**Jim Fisher**, in the hospital with an infection in his leg, and wife, **Laverne**, who has Parkinson's.

...**Vie Brock**, who had knee surgery in early August.

...**Dick and Sarah Hallum**, whose D was rear-ended in early August by a speeding driver. They had to cancel plans to attend the national rally.

...**Marie Money**, who has had cancer surgery with radiation and chemo treatments, and had a stroke in April. She is doing much better now.

...**Sonny Springer**, whose wife, **Sharon Ayer**, died in January after being in a coma for several years. **Sharon** was DOAI's membership director in the early years. If you wish to send a card to **Sonny**, the address is 91 E. Donohoe, Chula Vista, CA 97911.



Sonny Springer and Sharon Ayer

Please let the editor or membership director know of those who need a care card or sympathy card, and a mention in this column.

Attention, New DOAI Members!

Now that you've made the wise decision to join DOAI (or have been given a year's membership by the dealer from whom you purchased your Discovery), you can take advantage of one of the best things going: the DOAI Yahoo! group. The group has around 450 members, most of them actively involved.

If you have a question, problem, or suggestion relating to your Discovery, simply post your comments via an email to the group. Each participant receives your post, and any responses also go to the entire group. Some very helpful "conversations" have ensued over the weeks and months, and many DOAI members have benefitted from the helpful advice of other D owners.

How to join, you ask? Simple. Send an email to the DOAI Webmaster Bob Cook (cookrd1@discoveryowners.com) and ask for an invite (this is the simplest way to join). Bob will send the invite to you, which will include easy instructions to register with Yahoo! and begin your participation in the group.

Bob is also available to answer other computer- or Web-based questions you may have.

Welcome to DOAI, and give the Yahoo! group a try. See you on the 'Net!

Region Reports

Southeast Region by Frank Cason

The Blue Ridge Discoverys, as the hosting chapter, is making great strides in pulling everything together for the 2009 Southeast region rally set for next April 20-26 in Sevierville, Tennessee. Vendors are being identified and a draft seminar schedule is being prepared with seminars Tuesday through Saturday.



VP Frank



All meals for the rally will be catered, with a welcome barbecue on Monday night, an evening meal on Tuesday night, a breakfast on Wednesday and Thursday mornings, and evening meals on Friday and Saturday nights. Entertainment will be after each meal for an hour or so with local talent.

A golf match will be scheduled on Tuesday morning for those who enjoy the sport. The format will be Captain's Choice. So bring those clubs, let's have some fun and destroy that little white ball. Prizes will be given.

There will be plenty of free time for you to go to the outlet malls, flea market, or tour the Smokies. A great drive in the Smokies is through Cades Cove, a 6,800-acre valley near Townsend. This 11-mile trip provides a sample of the Great Smoky Mountains National Park's natural and cultural history.



A 50/50 drawing will be held every evening with half of the proceeds given to a local charity. We will have door prizes – number unknown at this point in the planning progress, but there will be door prizes. Make plans now to come help us *Discover the Smokies* next April!



Lastly, the Southeast region will be hosting the 2010 national rally somewhere in the southeast. The search process is in motion to find a quality RV park for this rally. More information will be published when we have a confirmed location. Site suggestions are

still being taken and researched. Thanks to all for your suggestions and help.

North Central Region by Charlie Richardson

Hello, Echo and I are in Branson, Missouri, and it is very hot here (95 plus degrees).

The North Central region is working very hard putting together a fantastic tenth anniversary rally in Goshen, Indiana.

I think this is a rally that everyone should attend. Echo is on the phone as I type this, talking to the caterers and lining up some delicious food for everyone. She has a few surprises for you, so be sure and come.



VP Charlie

The decorating committee is also working very hard along with the rally master, Dick Snyder. Dick just left the FMCA rally in Minneapolis, where he succeeded in not only buying a 2009 Discovery 40X, but also convinced Beaudry RV to become a membership sponsor. Congratulations, Dick!

Let's all meet in Goshen and have a good time. See you soon.

South Central Region by Joe Stewart

Here it is late July and Justine and I are still in the Oregon Cascades. We have moved from Detroit Lake to Cascadia State Park and it is beautiful. It is a primitive park, mostly tent camping, with RVs restricted to 30 feet or less, no utilities except bathrooms, and no showers. Our big D has sure attracted attention. In fact, I've discussed the D with several campers and suggested they visit Valley RV in McMinnville, where several Ds were on hand a few weeks ago.



VP Joe

We had a short but very pleasant visit with Jay and Lorrie Keneson this week, and together we visited Barry and Carol Cummings. We will meet the Kenesons in mid-August and travel to Goshen with them.

Justine and I will go to Decatur after the rally to have some work done at the factory. We will return home around the first of October for a short period of time. We plan to attend some rallies and visit various areas around South Central region to determine if there is any interest in forming a new chapter or two or more. If new chapters are not possible, then we'll attempt to gain new members for current chapters.

Justine and I hope to see you all at the Indiana rally in September.

Southwest Region by John Bujnovsky

I have sent emails to all New Mexico DOAI members to find out if there will be at least five coaches at the national rally in Indiana. I am awaiting replies to see if we could get together there to form a new chapter. I plan on calling those members who do not have email to introduce myself and discuss the possibility of forming this new chapter.



VP John

We are looking forward to meeting new and old friends at the tenth anniversary rally in Indiana in September. Travel safely!



Region Reports, continued

Northwest Region by Bob Soltwedel

The Northwest region consists of states and provinces all the way from Colorado to Alaska, yet we have only two small chapters. Why is that? As vice president of this region, I have been given many reasons, but no solutions. I look forward to any constructive ideas and would appreciate a discussion on this matter.



VP Bob

The Northwest Adventurers chapter is struggling to stay in existence. Earlier this year, the DOAI board of directors agreed to do a mass mailing to those living in Washington, Oregon, Montana, Idaho, British Columbia, and Alberta who, in the last four years, purchased a Discovery. (A similar mailing took place a couple of years ago to help both the California Goodtimers and the Arizona Discovery Owners chapters when their numbers were dwindling.) We hope the success those chapters experienced will be repeated for a similar revival of the Northwest Adventurers chapter. This greatly impacts the ability of the Northwest region to hold a national rally in that part of our region (Washington, Oregon, Idaho, or Montana).

For those who are new to DOAI, I would like to explain how the national rally process has evolved.

In 2001, a very successful western national rally was hosted by the Discovery Pioneers in Pueblo, Colorado. At that time there were four DOAI regions and two national rallies a year. At that rally the DOAI board of directors changed the four-region layout to six regions, thereby creating the need for a six-year rotation schedule for regions to hold national rallies. However, the board did not create the rotation schedule at that time.

The following year continued the policy of an east and a west national rally, and it wasn't until the 2003 national rally in Kennewick, Washington, that the board established the six-year rotation. (Incidentally, the hugely successful Kennewick rally was originally slated to be a Northwest region rally, hosted by the Northwest Adventurers, but midway in the process it was redesignated a national rally.) Because of this action, when the six-year rotation schedule was announced, the Northwest region was credited with hosting the 2003 national rally, and the result is our region will once again host the national rally six years later – in 2009 – and it will come up again in 2015 (see listing on next page).

At the 2006 national rally in San Antonio, Texas, National Rally Master Jay Keneson asked me, as the Northwest region vice president and with his help, to begin thinking about the rally location for the 2009 national rally. That winter in Yuma, Arizona, I canvassed Oregon and Washington Discovery owners for information on RV sites that might be suitable for a national rally. (Sorry, I did not find any Idaho or Montana owners I could ask.) Basically, I came up with Kennewick, Washington; Bend, Oregon (site of FMCA rallies); and Redmond, Oregon (site of Beaver and FMCA rallies). In addition, Nina found Land Yacht Harbor, Lacey, Washington (site of Airstream rallies). I also canvassed the Discovery

Pioneers members at our chapter rallies.

This information was passed on to Jay at the 2007 national rally, and at that time we discussed the possibility of locating the 2009 rally east of the Rockies. It was pointed out that the last Northwest national rally was held in the far northwestern area of the region, and because of the higher price of fuel, returning there might limit the number of east coast attendees.

Therefore, Nina and I began the process of looking at places in Wyoming and Colorado, including Cody, Wyoming (Yellowstone National Park), Douglas, Wyoming (Wyoming State Fairgrounds), Fort Collins, Colorado (Budweiser Events Center), Loveland, Colorado (Larimer County Fairgrounds), Brighton, Colorado (Adams County Fairgrounds), and Pueblo, Colorado (Colorado State Fairgrounds). After making a trip to Pueblo, I sent information to the Rally Master with the recommendation that we select Pueblo as the 2009 national rally site. The DOAI board approved the selection. A deposit has been made to reserve the dates of September, 18-24, 2009, for the DOAI national rally, *Discoverys in the Rockies*, at Colorado State Fairgrounds in Pueblo.

From this information you can see that the planning for a national rally begins about two or more years before the event. It takes a number of people (typically board members) to start the process, and now the responsibilities shift to the national rally master, region DOAI members, and the region vice president – all working together – to find the volunteers to plan the rally. For 2009, this includes the members of the Discovery Pioneers and the Northwest Adventurers chapters, and *all DOAI members living in the Northwest region*, whether they belong to a chapter or not.

Please carefully consider volunteering to help create a successful 2009 national rally. Several members of the Pioneers have volunteered already, but we always need more as there are many functions that have to be filled. Adventurers and Pioneers members, remember: we do not have total responsibility for providing all the volunteers for the rally. History has shown that the membership of DOAI has been very willing to step forward when it comes to helping at national rallies. However, we do need to provide the leadership, as that is usually easier if done locally. ❖

National Rally Master's Report

. by Dick Snyder

By the time you read this, the DOAI 2008 tenth anniversary rally will be over and we will be looking forward to future gatherings. The 2009 Southeast region rally in Sevierville, Tennessee, and the 2009 national rally in Pueblo, Colorado, are in the planning stages.



We need to look forward to 2010 and beyond to continue with acceptable sites. The 2010 national rally will be in the Southeast region and we are still looking for a good site. Let us know if you are aware of a location that can accommodate up to 200 coaches. ❖

Rally Opportunities

The following listing of chapter rallies does not give the RV park, but does list the town. Please see the chapter presidents' listing on the next page, and call that individual for more information on any of that chapter's planned rallies. Jump in and meet new friends and see new places via the chapter lifestyle. Other Discovery owners are waiting to welcome you! **Chapters: Are your rallies listed? If not, please send information to the editor (see page 3 for address).**

September 2008 –

- T/B/A Desert Rats, Big Bear Lake CA
- 3-6 Discovery Pioneers, Glenwood Springs CO
- 4-5 Heartland Discoverys, Goshen IN
- 8-14 DOAI Tenth Anniversary Rally, Back Home Again in Indiana, Elkhart County 4-H Fairgrounds, Goshen IN**
- T/B/A Discovery Texans, Goshen IN
- 25-29 Arizona Discovery Owners, San Diego CA
- 26-28 Louisiana Mudbugs, Colfax LA

October 2008 –

- 10-13 Mason-Dixon Discoverys, Frederick MD
- 17-19 Louisiana Mudbugs, Henderson LA
- 29-11/2 Blue Ridge Discoverys, Charleston SC

November 2008 –

- T/B/A Quad-LATO, Marshall TX
- T/B/A Texas Disco Road Runners, Hill Country TX
- 7-10 Arizona Discovery Owners, Pahrump NV
- 13-15 Discovery Texans, Ingram TX

December 2008 –

- T/B/A Texas Disco Road Runners, Waco TX

April 2009 –

- 20-26 Southeast Region Rally, Discover the Smokies, River Plantation RV Park, Sevierville TN**

June 2009 –

- T/B/A Blue Ridge Discoverys, Lewisburg WV

September 2009 –

- T/B/A Blue Ridge Discoverys, Morganton NC
- 18-23 DOAI National Rally, Discoverys in the Rockies, Colorado State Fairgrounds, Pueblo CO**


Looking Toward the Future

- 2010 DOAI National Rally, Southeast Region**
- 2011 DOAI National Rally, Northeast Region**
- 2012 DOAI National Rally, South Central Region**
- 2013 DOAI National Rally, Southwest Region**
- 2014 DOAI National Rally, North Central Region**
- 2015 DOAI National Rally, Northwest Region**

"Inside Mount Windshield Shades."

RV Quick Shades

- No Ladders
- No Drilling



RV Quick Shades mount on the inside of your windshield with UV treated suction cups offering daytime privacy while allowing you to see out. **RV Quick Shades** also reduce the heat build up inside your coach and block up to 80% of the damaging UV rays. 5 sizes and four colors are available. Made in the U.S.A.

Priced from \$69.99 per set - Our other products include: Side window kits, Mirror Covers, Wiper Covers, Driving Visors and our new "Pana-Shade Kit" for one piece windshields.

Please visit our web site at www.rvquickshades.com
or call 435-649-5865

Helpful RV Contact Information

Allison Transmission, GM Corp.	800.252.5283	Kwikke Products	800.736.9961
Atwood Mobile Products	574.264.2131	Magnadyne	800.638.3600
Caterpillar RV Engine Support	877.777.3126	Michelin North America	800.847.3435
Carefree of Colorado	800.621.2617	Norcold, Inc.	800.543.1219
Carriage Carpets (Shaw Flooring)	877.706.3054	Onan	800.888.6626
CCI Controls	800.521.5228	Power Gear	800.334.4712
Cummins, Inc.	800.343.7357	Riverpark	800.442.7717
Denso (call Fleetwood)	800.322.8216	RV Dump Locations	www.rvdumps.com
Dometic Corporation	800.544.4881	RVP (Coleman)	316.832.4357
Fantastic Vent	800.521.0298	RVP (Suburban)	423.775.2131
Fleetwood RV	800.322.8216	Splendide	800.356.0766
Freightliner Chassis Corp	800.385.4357	Thetford Corp.	800.521.3032
General Electric	www.geappliances.com/geac/	Trojan Battery Company	www.trojanbattery.com
Goodyear Tire & Rubber	800.321.2136	Velvac	800.783.8871
Intellitec	800.251.2408	Winegard	800.288.8094
Kidde Safety Products	800.880.6788	Xantrex Technology	800.670.0707

DOAI Board of Directors

President

Marshall Godwin, 8071 Windsor Dr, King George VA 22485-5210; 540.663.3725; 540.379.6767; godwin.marshall@kingfishersys.com

Executive Vice President

John Baker, 8419 Clover Leaf Dr, Rosenberg TX 77469-4867; 281.341.7177; 281.814.0004; bakerjohn@swbell.net

Vice President of Development

Phil Yovino, 214 Fairfield St, Shoreacres TX 77571-7155; 281.867.1809; 713.203.3114; pdyo41@sbcglobal.net

Secretary

Elsie Sikes, 240 Star Ln, Pipe Creek TX 78063-5147; 830.535.6532; 979.229.4588; sikesel@gmail.com

Treasurer

Miriam (Micky) Racer, 233 Rainbow Dr PMB 13396, Livingston TX 77399-0001; 281.851.6924; mimra@aol.com

National Rally Master

Dick Snyder, 411 Alexander Dr, Seymour IN 47274-8633; 812.522.4535; 812.521.0137; rdsnyder@broadreach.net

Past President

Phil Yovino, 214 Fairfield St, Shoreacres TX 77571-7155; 281.867.1809; 713.203.3114; pdyo41@sbcglobal.net

Region Vice Presidents:

North Central (IL, IN, IA, KS, MI, MN, MO, NE, ND, SD, WI, MB, NU, ON)
Charlie Richardson, 3219 County Road 461, Poplar Bluff MO 63901-6126; 573.785.8703; 573.429.4884; cer_ejr@yahoo.com

Northeast (CT, ME, MA, NH, NJ, NY, OH, PA, RI, VT, NB, NL, NS, PE, QC)
Steve Masterson, 3590 Round Bottom Rd PMB 272580, Cincinnati OH 45244-3026; 518.526.0054; masterson100@yahoo.com

Northwest (AK, CO, ID, MT, OR, UT, WA, WY, AB, BC, NT, SK, YT)
Bob Soltwedel, 4736 Harwich St, Boulder CO 80301-4217; 303.530.0775; 303.513.8548; bob.soltwedel@gmail.com

South Central (AR, LA, OK, TX)
Joe Stewart, PO Box 9100-176, Bandera TX 78003; 830.535.6633; 830.708.0485; retafwx@aol.com

Southeast (AL, DE, FL, GA, KY, MD, MS, NC, SC, TN, VA, WV)
Frank Cason, 1917 Stone Dam Rd, Chuckey TN 37641-4876; 423.639.4079; 423.552.5257; fcason@comcast.net

Southwest (AZ, CA, HI, NV, NM)
John Bujnovsky, 8129 Bay Colony St, Las Vegas NV 89131-6707; 702.360.9718; 702.528.2877; johnshirley1@embarqmail.com

DOAI Chapters and Presidents

Arizona Discovery Owners (AZ)

Russ Hinkle, 1041 Angel Dr, Alexander AR 72002-7006; 501.794.2449; 501.319.3962; rahinkle39@msn.com

Blue Ridge Discoverys (GA, NC, SC, TN)

Frank Cason, 1917 Stone Dam Rd, Chuckey TN 37641-4876; 423.639.4079; 423.552.5257; fcason@comcast.net

California Goodtimers (CA)

Homer Davis, 17953 Avenue 278, Exeter CA 93221-9322; 559.592.4611; 559.731.0442; hhdavis@wecreatem.com

Desert Rats (NV)

John Bujnovsky, 8129 Bay Colony St, Las Vegas NV 89131-6707; 702.360.9718; 702.528.2877; johnshirley1@embarqmail.com

Discovery Pioneers (CO, KS, NE, NM, UT, WY)

Chuck Brock, PO Box 578, Pequot Lakes MN 56472-0578; 218.330.4632; bass640770@aol.com

Discovery Texans (TX)

John Baker, 8419 Clover Leaf Dr, Richmond TX 77469-4867; 281.341.7177; bakerjohn@swbell.net

Dixie Travelers (AL, MS, GA, FL)

Kenneth Stanley, 153A County Road 773, Guntown MS 38849-9101; 662.348.3198; 662.231.0846; cks102@yahoo.com

Florida Discovery Rolling Gators (FL)

Sam Childs, 8724 Tahiti Ln, Tampa FL 33615-4427; 813.884.8616; 813.220.4371; sam.sandy4@verizon.net

Heartland Discoverys (IL, IN, IA, KS, MI, MN, MO, NE, ND, SD, WI)

Bobby Simpson, 129 Ivy Ct, New Tazewell TN 37825-5399; 423.626.8038; 765.860.3591; simy36@aol.com

Louisiana Mudbugs (LA)

Anthony Verdin, 2100 Suwannee Dr, Marrero LA 70072-4822; 504.341.7673; 504.416.5348; anverdin@aol.com

Mason-Dixon Discoverys (DE, MD, NJ, NC, PA, VA, WV)

John Ricciardi, 477 The Gardens Dr, Crossville TN 38555-0301; 252.619.7198; jonall135@yahoo.com

Midwest Discoverers (IN, KY, OH, PA)

Peg Lavoie, 1423 US 127, Bryan OH 43506-9644; 419.636.4602; 419.633.4850; peg@lavoies.com

Nor'easters (CT, ME, MA, NH, NJ, NY, OH, PA, RI, VT, NB, QC, ON)

Dorie Baker, Cypress Woods RV Resort Lot B-99, 5551 Luckett Rd, Fort Myers FL 33905-5509; 717.487.8879; dorieann@aol.com

Northwest Adventurers (AK, ID, OR, MT, WA, AB, BC, NT, SK, YT)

Gilbert (Wally) Wallington, 1729 S Fairway Dr, Pocatello ID 83201-2311; 208.237.4655; gwallington@juno.com

Quad-LATO (AR, LA, OK, TX)

Gene Sawyer, 442 AN County Rd 325, Frankston TX 75763-6462; 903.520.1253; gene@fesawyer.com

Texas Disco Road Runners (TX)

Jay Keneson, 404 Cypress Springs Dr, Spring Branch TX 78070-4640; 830.885.6043; 210.827.1855; jayk@gvtc.com

DOAI Committee Chairmen

Webmaster

Bob Cook, 876 Higgins Ave, Deltona FL 32738-7971; 386.860.8274; cookrd1@discoveryowners.com

Assistant Webmaster

Toni Calzone, 118 Monroe Dr, Apt 404, Rockville MD 28050-2549; 301.424.3118; 240.422.9189; antonia.calzone@verizon.net

Merchandise Coordinators

Mas & Betty Konatsu, 207 E Woodlawn Dr, Harker Heights TX 76548-1657; 259.699.9725; 254.223.2756; mbkonatsu@hotmail.com

Vice Treasurer

Pete Palasota, 8106 Knottingham Dr, Waco TX 76712-3406; 254.772.3791; 254.722.2653; petenmarthapal@aol.com

Chapter Reports

Texas Disco Road Runners by Jay Keneson

The Texas Disco Road Runners are taking the summer off from local rallies to travel and get organized to attend the DOAI national rally in September. At last count we have 14 Discoverys attending. Eight are planning to meet up along the way and travel together to Goshen. The other six are on the road traveling for the summer and will arrive separately.



Pres Jay

John and Judy Curtis joined Berry Cummings and Carol Sturm in Oregon to work at a wildlife area, hatching and raising pheasants and quails. John had to hurry home in June to have complete knee replacement, so that he would be ready to attend the national rally, after a six-week rehab. Our chapter has plans for a rally/campout in November in the Texas hill country, and a mini-rally in the Waco area in December for Christmas events, shows, entertainment, shopping, and let's not forget food.

Our number of Discoverys is still growing, with three new members since the last newsletter. Lorrie and I are traveling on a three-month journey via 14 states from Texas to Washington and across the USA on Route 2 just south of the Canadian border into Michigan, then down to Indiana for the rally. While traveling we are visiting with many old friends and relatives.

In Oregon we visited with Berry and Carol at the wildlife area, and Joe and Justine Stewart from the Texans who are working in a state park. Later Joe and Justine caught up with us at Sands Point, Idaho and the four of us traveled together, across the country to the rally.

Hope to see all of you at the national rally, where we can all exchange travel tales. But if not, stop and join us in Texas for one of our chapter get-togethers. ❖

Quad-LATO by Juanita Eddings

We had a good time over the Fourth of July at Cloud Nine RV Park near Hot Springs, Arkansas. The park furnished hot dogs and hamburgers with all the fixings in the meeting room on the Fourth, giving us a chance to visit with other RVers.



Pres Gene

It rained on us several times, but luckily when the rain hit we were doing what most RV people love to do ... we were playing games. We had a week end of *Jokers and Marbles* as well as several other games. John Eddings made several desserts that we enjoyed at every meal – the lemon cake with the richest icing you have ever tasted was named the favorite. Gene taught us a Boy Scout trick of fixing an omelette in a freezer bag and it was delicious. Also there was little mess to clean up.

We have a cool rally planned for this November if you are into eating seafood. It is a semi-rolling rally with the group meeting in Marshall, Texas, and rolling on to Louisiana to eat seafood as many times as we can. This rally lasts a week and

we would be thrilled if you decide to join us. Contact Gene Sawyer for details – gene@fesawyer.com.

We made plans for rallies for next year at Sherman, Texas; Joplin, Missouri; Texarkana, Arkansas; and Sallisaw, Oklahoma. Being the free spirits that we are at this age, our plans may change, but at least at this point we have a plan! Happy RVing to all of you. ❖

Mason-Dixon Discoverys by John Ricciardi

Hello to all from the Mason-Dixons. Hope everyone has been able to get their D on the road this summer.



Pres John

Several of our members attended the FMCA GEAR rally at the Richmond Speedway in Richmond, Virginia, this past June and got together to have an informal rally within the rally. We were fortunate enough to have all but one of our new officers attend, so we took the opportunity to have our first meeting. Our meeting just happened to take place on the fourth anniversary of the formation of the Mason-Dixon Discoverys. A lot was accomplished and a big thanks to all who were there.

Our July rally was changed from Branson, Missouri, to Bethpage Campground in Urbanna, Virginia, due to the high cost of fuel. Helen and Sonny Blackwell and Mary Anne and Larry Weinberg co-hosted this rally and did an excellent job. All who attended had a great time and complimented our hosts for their efforts. Thanks to Helen, Sonny, Mary Anne and Larry. It was suggested that this location would be an excellent site for more rallies.



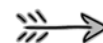
The Mason-Dixons had a great time in Urbanna

Our next rally will be October 10-13 at the Great Frederick Fair Grounds in Frederick, Maryland. Our vice president, Toni Calzone, was able to negotiate a very nice deal for us. If you're in the area, come join us for a good time. The rally registration will be posted on the DOAI site.

As of this writing, we are aware of seven Mason-Dixon coaches definitely attending the DOAI national rally in Goshen, Indiana, and the possibility of four or five more, depending on scheduling and health issues. We look forward to seeing everyone at the national, so we can renew old friendships, make new ones, and have a good time.

We congratulate two of our members on milestone anniversaries: Bob and Elizabeth Deal recently celebrated their 40th anniversary, and Lee and Julie Barefoot celebrated their 53rd anniversary.

Safe travels and hope to see you soon. ❖



Chapter Reports, continued

Louisiana Mudbugs by Jan McIlvaine

The Louisiana Mudbugs last rallied at Lincoln Parish Park in Ruston, Louisiana, May 23-24.

After our usual Thursday shopping expedition, we got down to the serious business of eating, having fun, eating, socializing and have I mentioned eating? Our chief cook and bottle washer, Joe Reed, assisted by his two trusty partners, Don Caldwell and Keith Barnes, fed us royally all weekend long (they were greatly assisted by Glenda Reed, Frankie Caldwell, and Carolyn Barnes): magnificent breakfasts and even more fantastic dinners (ribs, bratwurst, sausage, chicken, and all the trimmings). Joe came towing all the grills and cookers...aren't the Mudbugs lucky to have such wonderful cooks among us? You can't beat this Louisiana cooking.



Pres Anthony



The Mudbugs gals at Ruston with Glenda signing her new cookbook

And to boot, we found that we had a celebrity in our midst. What started out as a cookbook for family was unveiled as a full-fledged, reproduced book authored by Glenda Reed. Needless to say, we all lined up for the book signing. We had a wonderful

weekend of fun, frolic, fishing, Mexican Train, shopping, and did I mention eating?

We are taking a break for the summer – hot, hot, humid Louisiana summer – but will start again in September with a rally at Colfax Recreational Area RV Park in Colfax, Louisiana, September 26-27. This rally will be a “buddy rally” and we’d love to see old members and old friends – just call one of us and let us know so we can plan on you. We’d love to see you!



The great cooks of the Ruston rally

Heartland Discoverys by Bobby Simpson

Greetings to everyone from the Heartland Discoverys. We are all very excited about the tenth anniversary DOAI rally and working hard to make it fun. Thanks to the DOAI board for subsidizing this rally. It is affordable to all, even us bargain hunters.



Pres Bobby

We hope to see everyone there. Happy motoring!

Discovery Texans by Elsie Sikes

This is being written prior to the big anniversary DOAI rally in Goshen, Indiana. The Discovery Texans do not have rallies during the summer months and resume their schedule in September. The chapter voted to hold their September rally at the national rally, so your reporter does not have news of that for this edition of the newsletter.



Pres John

To substitute, your reporter is giving you the history of the chapter and how it began. This was provided for display at the DOAI rally, but since everyone was not able to make the trip to Indiana, here it is:



In June 2000, at a DeMontrond Travelers rally at Alamo RV Park in Boerne, Texas, a group of Discovery coach owners met to discuss forming a local chapter of Discovery

Owners Association, Inc. This discussion led to a meeting on August 12, 2000 at another DeMontrond Travelers rally at Guadalupe RV Resort in Kerrville, Texas, when 17 Discovery owners formed Discovery Texans chapter Those charter members were: Jackie and Della Quinn, Joe and Selah Mason, Terry and Shirley Smotherman, Don and Deloris Stone, Frances (Frank) and Edna Ryan, Don and Kathy Reaves, James and Betty Bridwell, Fred and Jean Olds, Ronald and Evelyn Link, John and Joyce Baker, Robert and Norma O’Neal, Ralph and Frenchie Cain, Aaron and Eloise Clemons, Jr., Phillip and Dorothy Yovino, J. B. and Lucy Vaughan, Raymond (Leon) and Elsie Sikes, James and Joyce Bednarczyk,

The first officers elected for the chapter were: President: Phil Yovino; Vice President: Don Stone; Secretary: Betty Bridwell; Treasurer: Della Quinn; Wagon Master: Joyce Bednarczyk; Assistant Wagon Master: Jackie Quinn .

The required paperwork was submitted and in September 2000, the Discovery Texans chapter was officially chartered and recognized by DOAI at the national rally in Richmond, Indiana. Of the original charter members of DOAI who founded the chapter, these are still members and active in DOAI and the Discovery Texans: Joyce Bednarczyk, Norma and Robert (Bob) O’Neal, Della and Jackie Quinn, Leon and Elsie Sikes, Shirley and Terry Smotherman, and Dorothy and Phil Yovino.

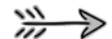
Discovery Pioneers by Joyce Wiechman

2008 has allowed the Pioneers to enjoy three wonderful rallies so far. In March we had a winter rally in Benson, Arizona, followed by our “snowbirds going home” rally held in Santa Fe, New Mexico, at the end of April. Our annual meeting rally was held in July at Jellystone RV Park in the Royal Gorge area of Colorado.



Pres Chuck

Our hosts, John and Jan Kovach and Terry and Sandy Ven Roy, put together a fun time. Our first



Chapter Reports, continued

evening was kicked off with a chips and salsa happy hour followed by the business meeting. Friday morning we made our way to Buckskin Joe's Frontier Town where we boarded a little train to view the Royal Gorge from high above. Then there was the gunfight drama on the town street. After a horse-drawn carriage ride we stopped for lunch in the restaurant.



Royal Gorge bridge 1,053 up from the Arkansas river and the Royal Gorge train

Saturday morning our caravan took us into Cañon City, where we were treated to a Queen Anne city tour. The tour began at the home of Al and Linda Ballard, who bought an 1889 Victorian house several years ago and completely renovated and remodeled it into a beautiful showplace. The main floor is dedicated to

Linda's tea rooms. Then we boarded the Queen Anne tour bus and Al showed us the historic town of Cañon City, complete with historical details about the first territorial prison in the West which is still in operation.

Following the tour we were on our own. Our car seemed to find its way to Holy Cross Abbey Winery. Naturally we could not leave empty handed. We returned to the park for a fabulous cookout provided by our hosts. They also provided rolls and coffee each morning.

Sunday morning we each went our way to explore the many sights in the area. Four of us opted to take the Royal Gorge train ride which follows the Arkansas river canyon. It was entertaining to watch the many rafters fighting the white waters of the Arkansas. Our destination was the view of the Royal Gorge bridge towering 1,053 feet above us.

We also made a trip to Cripple Creek, some of the group tried their luck in the gambling halls. Back at the park, the hosts laid out our "leftover supper." We said our good byes on Monday morning. Our thanks again to our hosts for showing us such a great time.

Our next rally will be at Glenwood Springs, Colorado, in September, hosted by Jerry and Linda Molzahn. ❖

Desert Rats by John Bujnovsky

Our June rally was held at Zion Canyon RV Resort. There were only three members present, but we still had a good time. Saturday morning was a hosted breakfast by our rally coordinator. Then after breakfast, we drove to Bryce Canyon National Park, where we had lunch and spent the rest of the day touring Bryce. The weather was a lot cooler and we enjoyed the nice weather as well as the sights. That evening, we had our usual barbecue and naturally stayed up too late telling stories and catching up. Sunday, we left for home with the exception of our vice president and treasurer (married to each other), who continued touring Utah to fish and kayak for the balance of the week.



Pres John

We believe our next rally will be sometime in September at Big Bear Lake in California. If any of you want to join us, please let me know: johnshirley1@embarqmail.com.

Hope you all had a great summer and are looking forward to a safe fall. ❖

Blue Ridge Discoverys by Frank Cason

The Blue Ridge Discoverys keep rolling on. We held our early summer rally at River Vista Mountain Village in Dillard, Georgia. What a great campground. We will plan on having a rally here annually. We had 18 rigs participate in the fun. We had members who took in shopping and sightseeing in the area. Others shared in a round of golf, and others just lounged around the pool and the RV resort.



Pres Frank

The rally opened Wednesday evening with a cook out of hamburgers, hot dogs and all the trimmings. Later that evening, we had a good ol' Georgia watermelon social. We had an RV discussion that covered maintenance, problems, solutions, and improvements. This was a great addition to our rally, and it will become a permanent part of future rallies.



BRD members waiting for a good meal

Our hosts had made arrangements with the Dillard House for a group dinner on Thursday night. Boy, did we ever overeat. The food and company were truly outstanding. We had a golf outing on Friday, and on Saturday night our hosts treated us to a super steak dinner with all the trimmings. I

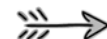
think all who attended had a great time. A special thanks to our hosts, Charlie and Elaine Harvell, Buddy and Becky Reynolds, and Bill and Janet Forbes, for a job well done. It seems like our rallies just keep getting better.

The chapter continues to grow as word spreads about the Blue Ridge Discoverys. We are, as of this writing, up to 57 coaches. We have had nothing but *fun* since the creation of the chapter in 2007, and we will continue to exercise that right.



After the meal, doggie bags were in order!

Our next rally is scheduled for October 29 in Charleston, South Carolina. The theme for this rally will be *Halloween Treat Under the Moss-Draped Oaks*. I have been informed by our hosts (Jerry and Josefa Smoak, Paul and Cecily Hart, and Harry and Sunny Mills) that we have spaces for 25 reserva-



Chapter Reports, continued

tions. Again, this is planned to be another *great BRD rally*. I am sure this one will fill up fast, so get those registration forms in to Buddy. The campground is already accepting reservations for the rally dates.

In closing, for the members who have not attended a rally, we look forward to seeing you soon. For the ones who have

attended the rallies; we want you to continue to join us. Isabel and I look forward to meeting new members and seeing old friends at the rallies. Each of our rallies is structured around the theme, "Let's go out and have a good time with friends." We always have plenty of food, we create our own entertainment, and in most cases will have a golf outing. So make plans to come on out and join us. ❖

Computer Corner

Web Site History 101 by Bob Cook

Back when DOAI was first formed by Jim and Dorothy Devine, I met both of them for the first time in Zolfo Springs, Florida, and I immediately joined DOAI. A little later that year, Jim and I got together at a Tom Raper rally in Richmond, Indiana, and the idea for a DOAI Web site was born.

Initially, the DOAI Web site was hosted on a free site and had banner ads. I don't remember the Web address, but we did not have our own domain address. However, once the site was up and running, Jim showed it to his contacts at Fleetwood and they agreed to underwrite the costs of our Web site, so now we have our own Web address!

Over time, the Web site has evolved to meet the needs of our members with new features and capabilities. Our prime directives are to be the best RV-owner group site on the Web, meet the needs of our members, and to accomplish this at minimal financial impact.

In addition to providing information on the happenings within DOAI, the Web site is a resource for DOAI owners with questions about the D or RVing in general. To facilitate these needs, a Yahoo! group and bulletin board were created soon after the Web site went online. Special note – only about 30 percent of our members belong to the Yahoo! DOAI group and even fewer use the bulletin board. I strongly suggest that you utilize these resources as they are excellent venues for quick feedback on your Discovery questions or problems.

When posting a message on the Yahoo! group or on the bulletin board, there are a few simple rules you should follow:

- ☞ Please refrain from typing your message in all capital letters as this infers shouting.
- ☞ Before you make your post, stop and read it again and make sure that you are not unintentionally (or intentionally!) offending anyone.

- ☞ Don't post jokes or political opinions...keep it RV related.

- ☞ When replying to a post, most times it is **not** necessary to include the entire copy of the post in your response.



Webmaster Bob

Recognizing the value of the Web site for recruiting new and retaining existing members, the DOAI board decided to make most areas of the Web site accessible to DOAI members

only. However, the bulletin board had also become popular for non-Discovery owners, so it was decided to create a new class of membership (associate member) that would allow access to the bulletin board as well as the Hints page.

Behind the scenes, Nina Soltwedel (DOAI newsletter editor) provides a lot of help to ensure close integration between the Web site and newsletter. Portia Williams (membership director) maintains and delivers the database necessary for the login procedure to work.

Maintaining the Web site and helping our members with questions take a lot of time and work. We have been very fortunate to have Toni Calzone volunteer to help with Webmaster duties. This ensures that one of us is always available. Toni has been invaluable at stepping in when I need help.

This is your organization and we want to be sure that we are meeting your needs. We always welcome suggestions and implement all that are feasible. As an example, Jim Fox asked for a way to find new items posted on the Hints page, so we started posting recent additions at the top of the page (with dates).

Have a question? A suggestion? Need help? Just drop me an email at cookrd1@discoveryowners.com.

See you on the Web! ❖

Basic Computer Lessons

New to computers and want to learn a little about them? Go to the Hints page at www.discoveryowners.com. Filed under "C" is a link to Basic Computer Lessons. Clicking this link will take you to another page where you can select from 28 tutorials aimed at the computer beginner. Please note that these tutorials were written before *Windows Vista* was released.

2009 Discovery Models Unveiled

Looking at the Possibilities

by Nina Soltwedel

Just preceding the FMCA rally in St. Paul, Minnesota, I had the distinct privilege of seeing the 2009 Discovery brochure. I was delighted to see the new floorplans, noting that while our beloved 39L no longer exists, what has replaced it makes me want to see one 'for real' as soon as possible.

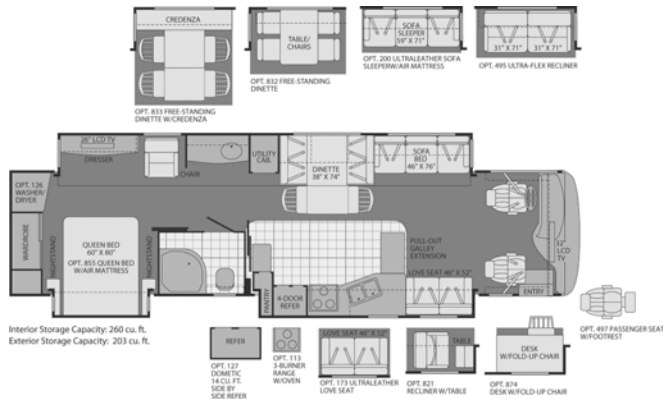
A few of the changes include five floorplans – one is 37 feet long, another is 39 feet long, and the other three are 40 feet long. As usual, Fleetwood designers have come up with interesting ways to make even the 37-foot version feel very roomy (see below – not shown is the 40K).

Other changes include two choices of interior wood: plantation cherry or symphony cherry. Both are luxuriously beautiful. The decor choices are cognac (soft browns with a tang of wine and vanilla), truffle (soft gray/green with brownish gray and off-white), and cumulus cloud (as the name suggests, grays of varying values). Each decor is neutral enough for the home decorator to add her or his own special pops of color.

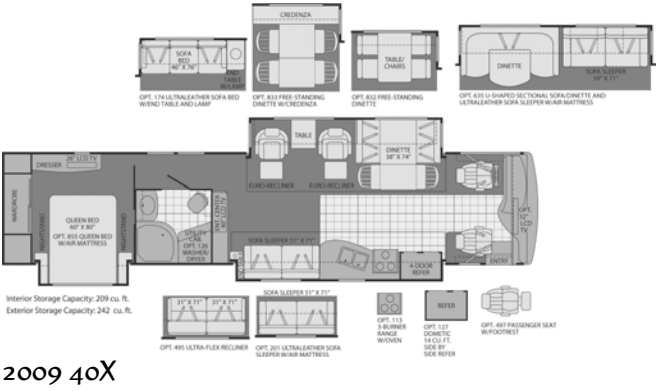
A new exterior color for 2009 is black cherry, and that version will be on the Winter 2009 masthead.



2009 37D



2009 39R



2009 40X

I wish I had a digital image of the 40K floorplan to show you...it has a bathroom at the back, and a half-bath midship. The 40G has an optional full six-foot desk, or one can choose bunk beds in the same spot. The area for these variations can be closed off to a six-foot by seven-foot room with heat and air conditioning so one can have privacy. Another nice feature of the 40G is the full-wall slide on the patio side, so the awning is attached to it for better coverage. Also new for 2009 is the PowerBridge chassis, which was reported on in the latest FMCA magazine. Those who have driven the 2009 say the handling is superb, even in high winds. The side-opening bay doors are another plus of the 2009 models, and so are the pass-through bays.



The 2009 40G, standing at the front, looking toward the back. Notice this version has the optional bunk beds. On the left is the U-shaped dinette. Looks spacious and is spacious!

A Highway Slam-Bang for Hallums

..... by Nina Soltwedel

As mentioned in the "Thoughts & Prayers" column, Dick and Sarah Hallum (and dog, Toby) were victims of a speeding driver recently. She ran into the rear of their Discovery and caused a whole lotta damage. Dick and Sarah and Toby were not hurt, but their D is going to be out of commission for a while ... long enough that they won't be able to make the national rally.

I asked Dick to keep me posted on the whole thing, and this is what he wrote: "We are extremely disappointed that we are not going to be able to join you and all of our friends in Goshen. I know it's going to be a great rally.

"State Farm, my insurance company, will take care of the damage, and then go after their money. The young woman's insurance company may have a way out, since the car she was driving is insured in her grandfather's name, and she had been driving the car for two or three months at school. That would make her an uninsured driver.

"By the way, the first thing the Department of Public Safety trooper asked me was, 'What kind of a driver's license do you have?' Here in Texas one must have a Class B license if the GVWR is 26,001 pounds or greater. I got mine two months ago. This license thing is supposed to be going nationwide, so everyone may want to check with their state troopers."

Dick's experience with the DPS underscores a recent thread on the DOAI Yahoo! group. Several Texans shared information about that state's new regulation and how it affects RVers. This is a good reason to join the DOAI Yahoo! group and read the thread. There's lots of help there for everyone.

I am sure Dick and Sarah have kind thoughts from everyone flowing their way, and we hope to see them on the road again soon. ❖



First look at Hallums' D after being rammed.



Close-up of the damage. Ouch!



This is going to take a while to 'make it all better.'

A Cooking Tip
Using a Microwave/Convection Oven

If you're a Good Sam member, you receive the *Imagazine, Highways*. In the June 2008 issue, page 22, you'll find an excellent article filled with some good advice about using the convection feature of your coach's oven. If you've been leery of using the convection feature, this article may give you the courage to go ahead and take the plunge. Happy baking! ❖



Fleetwood Technical Information

RV Tires by Neil Buschur, Fleetwood Owner Relations

Fleetwood provides safe and comfortable driving in your RV through the high quality Goodyear or Michelin tires installed on your chassis. To maintain the safety and comfort you have come to expect, your tires need to be monitored and at times have the air pressure adjusted for changing use and conditions.

RV tire care is a very important subject that needs to be understood for your safety while operating your RV. You will be amazed at all the information that is available on tires. Goodyear Tire Company and Michelin Tire Company have provided the following information.

Understanding Tire Size Information

If you have a tire, for example, that is a 275/70R22.5: the number 275 is the width of the tire in millimeters. The number 70 is the aspect ratio, which is the section of the height divided by the width. The R would stand for a radial tire and the 22.5 is the rim diameter.

There is also a DOT code stamped on the tire, which says what plant the tire was built at, the government size and ply code, a construction code and a tire build date which is the last four numbers. For example, if the last four numbers are 1201, this tells you the tire was built on the twelfth week of 2001. Many sources now suggest replacing tires after five to seven years of use regardless of tread wear.



Capacity and Inflation

There are capacity differences of single versus dual tires. Tires that are together in a dual are subject to unequal loads for a variety of reasons, including the natural crown of the road, mismatched inflation pressures, and overall tire diameter variances. Therefore, the maximum carrying capability for tires in a dual set are reduced by approximately ten percent to help compensate for these load variances. Tire maximum carrying capacities are shown on the side of the tire; however, you should adjust air pressure to provide the needed carrying capacity while assuring the best ride possible.

Some of the negative effects of a tire that is overloaded or underinflated are possible tire failure from overheating, reduced handling capability, loss of fuel economy, fast or irregular wear, and reduced braking performance. Wear rate is optimal when the tire operates at the correct inflation, temperature, and pressure. Underinflation is worse than overinflation, since not only does the tire wear unevenly, but it also generates more heat from overdeflection. Correct inflation pressure that assures the proper operating temperature is the key to satisfactory tire performance.

Weighing the Evidence

The only way to determine the tire load is to weigh the RV. Some of the places the RV can be weighed are storage

company lots, grain elevators, gravel pits, recycling companies, commercial truck stops, and DOT roadside scales. There is also a company called RVSEF that weighs coaches at many rallies and events. You can schedule an appointment from their Web site at www.rvsafety.org.

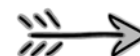
When you get the coach weighed, it should be fully loaded, including passengers, food, clothing, fuel, supplies, and towed vehicle. The RV must be level on the scale. If possible, weigh by individual wheel positions; if not, by axle positions. A large difference in weight from side to side may mean that a redistribution of the load is necessary. Inflation pressure of the tires should be adjusted to handle the maximum load. All tires on the same axle should carry the same inflation pressure and this should be based on the heavier end. Inflating this way maximizes the driver's ability to control the coach and accommodates shifting of the load from side to side. It is also important not to exceed the maximum rating for the wheel. The way to obtain the proper load/inflation tables, is by visiting the tire manufacturer's Web site, which for Goodyear is www.goodyear.com/rv and Michelin is www.michelintruck.com or by calling them.

Regular Care

One of the best practices for tire care is to make regular pressure checks, including once per month while in storage, before each trip, and each morning during trips. Inflation should be checked when tires are cold; you should be stopped at least one hour before checking them. Do not bleed air from hot tires. Use proper sealing metal caps or quality flow-through valve caps. Check inside duals as well as outside tires and use an accurate gauge.

Tires which have lost more than 20 percent of recommended pressure (cold) should be considered flat and should be professionally inspected and repaired. An important thing to remember is that the air pressure is what carries the load, not the tire. Air temperature also affects tire pressure; a ten degree Fahrenheit change will change inflation pressure two percent in the same direction. That is an increase of two psi on a 100 psi tire when the temperature increases ten degrees.

Goodyear and other tire manufacturers store new tires deflated and unmounted in environmentally-controlled warehouses, so the tires do not age as they would when inflated in outdoor conditions. Once installed, tires prefer regular use and long storage periods should be avoided. As you can see, the typical RV use pattern of many short trips with storage between use is not the best environment for any tire, so regular inspection and pressure checking is very important. Goodyear tire warranty begins on the date of your tire purchase, not the date of manufacture. The RVIA says statistics indicate that the average life of an RV tire is five to seven years. RVIA and



Fleetwood Tech Information, cont

many tire manufacturers suggest replacing tires with seven years of exposure even if the tread seems to be adequate.

Tires contain additives to protect them from cracking. As the tire rolls and flexes, these additives rise to the surface of the rubber to protect it. Goodyear tires do not require dressings or appearance products to protect them when in use. Occasionally washing the tires with mild soap and water is recommended. Excessive cleaning or use of products that contain alcohol or petroleum products may accelerate crazing (fine cracks) and/or cracking of the rubber.

Storage

Tire storage recommendations would be ideal to take the weight off the tire. If this cannot be done, then you would want to completely unload the vehicle for minimum weight. Inflate the tires to the recommended operating pressure plus 25 percent, but make sure the wheel's inflation capacity is not exceeded. The storage surface should be clean, well drained, and reasonably level. The tires do not need a barrier when

parked on concrete surfaces, but if long-term storage is on an asphalt surface, a barrier is recommended due to the oils in the asphalt. Cover the tires with an opaque polyethylene cover to minimize the effects of oxygen and ozone. Move the vehicle at least every couple months (rotate 180°) to prevent ozone cracking in the tire bulge area as well as "flat spotting" from prolonged strain of the sidewall and tread deflection. Adjust inflation pressure before putting the tire back into service.

In Closing

In summary, remember to know your weights by wheel position, use the correct air inflation. Check air pressure daily when on trips. The inside duals usually carry more of the load, so check the pressure in them. Use proper storage methods and remember lower speeds mean better fuel economy, fewer fuel stops and longer tire life. You can get more information from Goodyear via phone (800.321.2136) or their Web site (www.goodyear.com/rv); and Michelin via phone (800.847.3435) or their Web site (www.michelintruck.com), click on Tires, then click on Retreads, and then RV tires. ❖

RV Safety

What You Need to Know to Tow by Aon Recreation Insurance

With rising fuel prices and limited access for coaches at many scenic and wilderness areas, towing a vehicle behind your RV is becoming an increasingly popular option. Before you hook up your car, however, there are some important things you need to know to make sure you and your vehicles are headed down the road as safely and securely as possible. The most basic requirement for safe towing is the right equipment, but even the right equipment must be backed by careful and attentive driving and maintenance.

Equipment Options

There are three ways to tow a car with an RV: a tow dolly, a car trailer, and four wheels on the ground. How often you will be towing and how frequently you will be hitching up and unhitching the car are prime considerations in deciding which option best suits your needs.

The hitching process using a dolly is the most involved and time consuming. The dolly first has to be hitched to the coach, then the wheels of the car need to be driven up on the dolly and the car secured to the dolly. A light bar with brake and tail lights needs to be mounted on the car. Keep in mind that the dolly will add to the gross combined weight of the coach. The dolly is a good choice for vehicles you don't want to or can't tow four wheels down, but they are somewhat cumbersome otherwise.

Towing a car on trailer is somewhat easier than using a dolly, since the trailer utilizes its own brakes. Other advantages of a trailer include the ability to back, as well as allowing you to raise all four wheels of the car off the ground. Like the tow dolly, it also adds to your vehicle's weight. The biggest disadvantage dollies and trailers have is what to do with them when you get to the campground. Many campgrounds do not

have room for parking a trailer or dolly along with your coach. The most popular, and generally considered the easiest and most convenient method of towing, is with all four wheels on the ground using a tow bar. Tow bars have great portability. When you reach camp, you can unhook, fold up, and store the towing equipment in your coach or car.

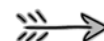
Vehicle Options

If you decide to tow using a tow bar and all four wheels on the ground, your next consideration is the requirements of the vehicle you want to tow. Most vehicles on the road today can be towed four wheels down.

Most vehicles with automatic or four-wheel drive transmissions, however, require a lubrication pump or driveline disconnection before towing. It's important to know your vehicle's requirements before towing, so if you are unsure, check your owner's manual or contact your car dealer for the specific instructions on how to tow your car behind a motorcoach.

Tow Bars

There are three general types of tow bars available for consideration: 1) self-aligning motor home mounted, 2) self-aligning car mounted, and 3) rigid A-frame. When selecting a tow bar, keep in mind it must be strong and durable enough to handle the weight and unpredictable road conditions that come its way. You also want the tow bar to be easy to operate and convenient to store. You'll also need to match your tow bar selection to the weight of the car you're towing. Choose an SAE Class II hitch for vehicles up to 3,500 pounds; an SAE Class III hitch for vehicles up to 5,000 pounds; and an SAE Class IV hitch for vehicles up to 7,500 pounds.



RV Safety, continued

In addition to weight requirements, drivers will want to consider choosing towing products that are backed up by warranties and customer service programs that can assist you 24 hours a day, seven days a week as you travel across the country. Companies such as Blue Ox, manufacturers of the Aladdin and Aventa II, offer reliable products and responsive service nationwide.

The list of essential towing equipment for safe, four wheels down towing includes the tow bar itself, along with a tow hitch/receiver, a base plate, safety cables, and a tail light wiring kit. Have a professional RV equipment dealer mount the base plate for the tow bar on the front of the car and wire the car's brake and tail lights so they will operate in sync with the motor home's lights. Federal law requires the RV-activated tail lights and safety cables.

Attentive Driving and Maintenance

Safety and security are your top concerns when towing, which can become particularly challenging in stopping situations at higher speeds or going down steep grades. You need to review the towed weight limit specifications for your RV to determine if its brakes are adequate to stop the towed vehicle. If not, you will want to consider one of the many products on the market – such as AutoStop and BrakeSafe – that will activate your car's brakes when you apply the coach's brakes.

Also, you'll want to increase your following distance from a car's recommended two seconds to six seconds or more. Other recommended security, convenience, and handling features include a speedometer disconnect, a guard to protect your towed vehicle from road debris, and a tow bar storage cover.

Before you tow, review the following 20-point towing safety checklist to make sure you're on top of the routine and the unexpected.

Towing Safety Checklist

1. Inspect the tow bar, dolly, or trailer for loose bolts and worn parts.
2. Tighten loose bolts and replace worn parts before hooking up. If you have bolts that are consistently coming loose, use Loctite or put on a double nut to keep them tight.
3. Hook up on a flat, smooth surface.

4. If you have a coupler style tow bar, check the fit of the couple on the ball. Adjust the coupler if necessary.
5. Hook up the tow bar. Make sure hitch is snugly engaged and the safety pin is in place to prevent accidental unhitching.
6. Set up the towed vehicle's steering and transmission to tow.
7. Check your parking brake to ensure it is disengaged.
8. Latch the legs on a self-aligning tow bar.
9. Attach the safety cables. Cross the cables between the vehicles and wrap the cables around the tow bar legs to keep them from dragging.
10. Attach the electrical cable.
11. Check the function of all lights on both vehicles.
12. Locate your spare key and lock the towed vehicle's doors.
13. Drive with care and remember: Your vehicle will be about 25 feet longer while towing.
14. Each time you stop, check the tow bar, base plate, and cables to make sure they are still properly attached.
15. Check the tires of the towed vehicle to make sure they are not going flat. If you are using a dolly or trailer, check the wheels to make sure they are not hot to the touch. If the wheels are hot, it may indicate a brake or bearing problem.
16. Each day before you start, check the lights to make sure they are working properly.
17. Between trips, clean the tow bar and cables to keep them in good shape. Also, clean and lubricate the tow bar as recommended by the manufacturer's instructions.
18. Make sure all safety decals are readable.
19. Never let anyone ride in the towed vehicle.
20. Drive safe and have a great trip! ❖

We thank Aon Recreation Insurance for permission to reprint this article. With nearly 40 years of experience insuring RVs, no one understands your vehicle like Aon Recreation Insurance. Aon has multiple carrier options and can provide you with a policy custom-designed for the special nature of your coach. Aon also offers the added benefit of umbrella coverage, which provides liability coverage that extends beyond your RV, home, and auto insurance policies to protect you from a costly lawsuit. To get a quote, call Aon at 800.521.2942, or visit www.aonrecreation.com for more information.

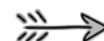
Silent Auction Goes to the Dogs

Gratifying Support for 4 Paws for Ability, Inc. by Nina Soltwedel

By the time your newsletter is placed in your mailbox, our organization's celebratory tenth anniversary national rally will be history. However, whatever the total financial results for 4 Paws for Ability may be, we give a huge THANK YOU to the people who have gone the extra mile to honor Dorothy Devine's memory and assist a great service organization.

The first list is of those outside companies and non-DOAI members who demonstrated outstanding generosity:

America's Best Campground, Branson, Missouri
I personally know of about 50 DOAI coaches which patronized this lovely RV park at a mini-rally preceding the 2004 national in Sedalia, Missouri (and I bet there are many more of you who have enjoyed staying there). This super campground is delightful, and is the best of both worlds (their slogan is right on) ... *City Close - Country Quiet*. When I contacted Sue Alkire to see if they would donate a night or two of camping,



Silent Auction, continued

I received an immediate "Yes!" and a certificate for two nights, valued at \$70.

The campground was the 2008 recipient of the Good Sam Welcome Mat Award ... an award they have won every year since 2003 when the award was established! The award names ABC as the "Most RV-Friendly Good Sam Park" in the U.S. and Canada. Check out their Web site at www.abcbhranson.com.

R&R Leisure Products, Henderson, Nevada

You may not be fully familiar with this company, but I bet you've heard of their product: *Campfire In A Can*. Yep, this is the company that began with "The Traditional" version, which burns wood, or manufactured firelogs, or charcoal. A big seller, but then they decided to tweak it a bit, and came out with "The Gas Can," a version which is CSA approved to 64,000 BTU using propane.

Both products are easily transported in an RV, being compact and durable. They fit into the bay beautifully, and are so easy to use. Their slogan, *Designed to Work, Built to Last*, can be attested to by several people I know who swear by them.

Nicole Mahon, president of R&R, was delighted to jump on the 4 Paws for Ability bandwagon, and the company generously donated one of each type to the auction, valued at a total of \$500. Check out their Web site at www.campfireinacan.com.

Roundabout Publications, LaCygne, Kansas

If you've surfed the 'Net to any extent, you may have come across a wonderful Web site, www.roadnotes.com. The site is dedicated to including as much helpful travel information for RVers as possible, and is the brainchild of David Cattelino.

When you have the time, check out the site which is currently being completely redesigned. Each week new and updated information is being added to help make your camping and travel experience more enjoyable. One of the more helpful aspects is that individuals can send David information about their favorite city, county, or state campground, and David will check it out and then post the information for everyone to use. For example, going to Wisconsin and need some ideas of interesting places to camp? Click on the state (on the homepage) and you'll be taken to a long list of possibilities.

David has created other Web sites you might want to check out: a great one is www.scenicdrivesusa.com. Other sites include RV dump station locations (www.rvdumps.com) and a listing of travel books. The interesting thing about the RV dump station site is that you can download a PDF 'log book,' keep track of dump stations as you find them, and if they aren't on David's list, you can email the information to him so he can put it on the Web site.

David is the author of quite a few must-have books on RVing, including his latest release, *Wal-Mart Atlas*. I bought a copy in advance, then asked him if he'd be willing to donate a copy to the cause. Not only did he say "Yes!," he donated six copies with a total value of \$150.

Traveler's Guide for Emergency Alerts

Author Shelia Simpson saw a need and filled it.

Have you ever been camped and heard a weather alert for a county, but you were unsure if it applied to you? Her recently published book will give you the answers. It lists all fifty states' cities and towns with campgrounds *and the county they are in* which can be life saving. Emergency alerts include tornadoes, forest fires, hailstorms, earthquakes, chemical spills, blinding fog, floods, severe thunderstorms, etc.

You always know the city or town where you are, and all you need do is open the book to the state, find the city or town, and it will tell you the county you're in. Every traveler needs this book to stay safe. Its 400 pages of much-needed information is another wise addition to your RV.

Shelia was quick to say "Yes!" to my request, and she sent a copy valued at \$25.

www.queenmotorhome.com

This is another book, even though the title may be a bit unusual. Author Patt Fero has written a charming and funny book about two female baby-boomer-aged best friends who run away from home in a motor home. The reviews on Amazon have been very positive and I'm looking forward to reading my own copy. The book is easy to read and contains no controversial subject matter.

If you visit Patt's Web site at www.queenmotorhome.com, you can read the book summary, book excerpts, readers' comments, and find out more about the author. Patt donated a copy to the auction, valued at \$17. See Patt's paid ad page 2.

Former Members and Friends

Former DOAI charter members, Harvey and Marion Becker, donated three knitted hats. Friends of DOAI, Bob and Donna Cumrine, donated a handmade walking stick, and a hand-decorated gourd. More friends of DOAI, John and Pat Stem, donated a Columbia Sportswear Company *Executive Set* for hikers, containing a compass/thermometer, an all-purpose knife/scissors, and a carrying case for your I.D./license.

This second list includes those DOAI members who contributed hand-crafted items or purchased items (and a special extra gift), all to help those who need our help. An equally big THANK YOU goes out to each of you!

Arizona Discovery Owners chapter

Magellan eXplorist 500 LE GPS, value \$200

Chuck and Vie Brock

Hand-embroidered Christmas stocking (by Vie), value \$100

Bob and Mary Cook

Hand-painted wood TV tray (by Mary), value \$50

Desert Rats chapter

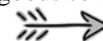
Flying J \$100 gift card

Jim Devine

2007 Pride Go-Go battery-operated scooter with extended battery, value \$850

Discovery Pioneers chapter

Roll-up 48"x26" picnic table, and Roam Homegoods sofa server table, total value \$110



Silent Auction, continued

Discovery Texans chapter

Plans to purchase something from a vendor at rally and donate to auction, value \$100

Carl and Teri Dykman

Ice Block light (by Teri), value \$10

Tom and Sandy Fields

2005 Mopeds n' More three-wheeled scooter with new battery pack, value \$500

Jim and Pat Gravel

A table runner, and three sets of two placemats each (by Pat), value \$49

Heartland Discoverys chapter

Coleman RoadTrip Classic Barbeque Grill, value \$211

Skip and Dee Kruse

Hand-made afghan (by Dee), value \$125

Louisiana Mudbugs chapter

TomTom ONE 3rd Edition GPS, value \$200

Mac and Jan McIlvaine

Hand-made, hand-quilted flag wall hanging (by Jan), value \$125

Quad-LATO chapter

Jokers and Marbles game (by Frank Sawyer), value \$45

Charlie and Echo Richardson

Rally Mfg. 12-volt refrigerator/warmer, value \$66

Garry and Gayle Shirey

Mosaic-topped side table (by Gayle), value \$125

Leon and Elsie Sikes

Hand-made flannel purse (by Elsie), value \$45

Bob and Nina Soltwedel

Fast Track game (by Bob) and four table toppers/wall hangings by Nina, total value \$175

Dave and Diane Vande Berg

Hand-crafted baby blanket and three hand-made scarves (by Diane), total value \$71

There is one more donation from Jim Devine: he will donate **matching funds up to \$1,000** to help increase the total amount of the donation to 4 Paws in Dorothy's memory. ❖

Discovery Motor Homes for Sale

2000 37G: 21,000 miles, new tires, GPS, ext. warranty w/unlimited miles. Upgraded batteries and inverter. Located in North Carolina. **Wes Carter;** 971.241.9322; *rustysilverwings@aol.com* **\$59,995**

2002 37U: 11,995 miles, many upgrades, all options including In-Motion antenna/dish. Located in Florida. **Robert Dressel;** 941.747.7877; *bdressel@eps-inc.net* **\$74,995**

2002 38P: Low miles, mint condition. Located in Florida. **Raymond Martin;** 513.777.7507 until October, then 813. 642.9248; *martindwe1835@aol.com* **\$90,000**

2003 39L: 36,000 miles; great condition; non-smokers; all options plus. Located in Missouri. **Bill Simek;** 573.372.6087; *billsimek@aol.com* **\$99,000**

2004 39S: 11,500 miles, excellent condition, original owner. **Paul Martin;** 860.928.1425; *crosscut93@sbcglobal.net* **\$115,000**

2005 39L: 10,000 miles, four slides, most available options, clean, no smoke, covered by extended warranty. **Note:** Jeep in photo not included. **Bill Arquette;** 858.748.2775; *capt.bill@cox.net* **\$129,000**

2005 39S: 27,000 miles, clean, garage kept, outside entertainment center with grill, In-Motion satellite, all manuals. Located in Tennessee. **Jerry TeVrucht;** 931.455.6345; 931.273.1117; *jbtevrucht@gmail.com* **\$127,500**

2005 39S: 45,000 miles, three slides, extended warranty. **Note:** This unit available for purchase, or lease, or short-term rent. Located in South Dakota. **Rick Edelen;** 605.415.5764; *raeski64@hotmail.com* **\$124,900**

2008 39R: Full-wall slide plus two slides on opposite side; 8,000 miles, like-new condition. **Skip Russell;** 318.548.5050 **\$169,500**

Motor Home-Related Items for Sale

THE ORIGINAL – DON'S HUB NUT WRENCH: Can be used on most coaches on a Freightliner chassis with aluminum wheels and the screw-in decorative nut. Makes polishing rims easier with rear axle can off. **Don Cullins;** 9025 Robinhood Cir, Westerville OH 43082-9665; *sedc432@sbcglobal.net* **\$14.95 plus \$3 shipping/handling**

ULTIMATE HUB NUT TOOL: Use for the removal of Freightliner chassis hubs on coaches with aluminum wheels. It saves the hub from the unforgiving channel locks and pipe wrenches, plus allows the hubs to be removed for cleaning and polishing. **Frank Cason,** 1917 Stone Dam Rd, Chuckey TN 37641-4876; 423.552.5257; *fcason@comcast.net* **\$10 plus \$2.50 ship-ping/handling**

PASSENGER SIDE REAR WINDOW for 2004 Discovery 39S. Measures 47⁵/₁₆" wide and 34³/₈" high; has two flip-out windows in bottom Thermopane®. Located in Connecticut. **Paul Martin;** 860.928.1425; *crosscut93@sbcglobal.net* **\$450 plus shipping**



2009 SOUTHEAST REGION RALLY
Discover The Smokies
April 20-26, 2009
River Plantation RV Park
1004 Parkway, Sevierville, Tennessee

REGISTRATION FORM

*Please PRINT legibly or TYPE all information
as you want it to appear on your name badge*

Pilot's Last Name _____ First Name _____
 Co-Pilot's Last Name _____ First Name _____
 Street _____ City, State, ZIP+4 Code _____
 Home Phone _____ Cell Phone _____ Other _____
 Email _____
 Emergency Contact _____ Emergency Phone/s _____
 DOAI # _____ DOAI Region Affiliation _____ Local Chapter _____
 Need handicap parking? Yes _____ No _____ First Southeast Region Rally? Yes _____ No _____
 Are You? DOAI Officer/Chairman _____ Chapter Officer _____
 Guest/s Name, City, State _____

REGISTRATION:

\$347.00 per coach with two adults (April 20-26)	\$ _____
\$276.00 per coach with one adult (April 20-26)	\$ _____
\$71.00 each additional person/child (April 20-26) x _____ person/s =	\$ _____
\$28.00 early arrival Sunday, April 19	\$ _____
\$20.00 DOAI membership (if not already a DOAI member)	\$ _____

OPTIONAL TOUR AND OTHER EVENTS:

Tour 1: Tuesday am, April 21 - Bush Bean Factory Tour	\$12.00 x _____ person/s =	\$ _____
Tour 2: Tuesday pm, April 21 - Bush Bean Factory Tour	\$12.00 x _____ person/s =	\$ _____
Golf Tournament: Wednesday, April 22	\$40.00 x _____ person/s =	\$ _____
Country Tonite: Thursday, April 23	\$13.75 x _____ person/s =	\$ _____
Red Hat Tea: Saturday, April 25	\$1.00 x _____ person/s =	\$ _____

MAKE CHECK PAYABLE TO: *Discovery Owners Assn., Inc.* **Check Enclosed/Total** \$

MAIL CHECK AND REGISTRATION FORM TO:

Buddy Reynolds, Registrar
 205 Morgan Ct., Greer, SC 29650-2828
 Home 864.268.2052 – Cell 864.979.9202
2blreynolds@bellsouth.net

REGISTRATIONS MUST BE RECEIVED BY JANUARY 30, 2009

Cancellation may be made up to January 30, 2009 – **AFTER JANUARY 30, 2009 – NO REFUND**

→ → → COPY FORM FOR YOUR RECORDS ← ← ←

You will receive a confirmation of your registration via email

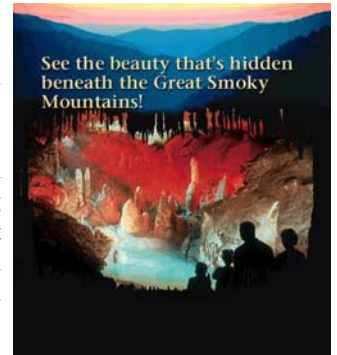
Photos to Lure You to the 2009 Southeast Region Rally



Cades Cove was once known as “Kate’s Cove” after an Indian chief’s wife. The Cove drew the Cherokee Nation back again and again by its abundant wildlife and good hunting. Later, Cades Cove’s wildlife drew European descent frontiersmen to make it their home. They and their offspring cleared the fertile valley floor and built farms to sustain them. The pioneers’ families lived in Cades Cove for many generations before the cove became part of The Great Smoky Mountains National Park. Today, Cades Cove is still as full of wildlife as before but draws, not hunters, but millions of Smokies’ visitors.

Forbidden Caverns, located in Sevierville, is one of America’s most spectacular caverns. Hundreds

of years ago, Forbidden Caverns was known to the Eastern Woodland Indians who roamed east Tennessee’s forests and mountains in search of good hunting grounds. The cave was used as a shelter in the winter and the cave river provided a constant supply of water. Scientists believe the source of the water to be an underground lake located beneath English Mountain, now famous for its spring water. Flint or chert is found here in limited quantities and was used to create arrowheads, knives and scrapers.



Discovery Owners Association, Inc. Membership Application

Welcome to the premier organization for owners of Discovery by Fleetwood® motor homes. DOAI is an organization intended to foster social opportunities and information exchange among all members.

Dues are \$20 for the first year (includes one-time \$4 administrative fee); \$16 for one-year renewal; \$45 (\$49 new members) for three years; \$75 (\$79 new members) for five years.

PLEASE...PAYABLE IN U.S. FUNDS ONLY!

Questions? Call 888.594.6818

Mail the form below with your check payable to *Discovery Owners Association, Inc.* to:

Portia Williams, Membership Director

P. O. Box 95

St. George, UT 84771-0095

You can join/renew online at www.discoveryowners.com

Last Name _____ First _____ Spouse/Partner Name _____

Address _____

City, State/Province, ZIP+4 Code/Postal Code _____

Home Telephone _____ Cell Telephone _____

Discovery Year and Model _____ Email Address _____

Who recommended DOAI membership to you? _____

Check enclosed for \$ _____ representing (*check one*): One year Three years Five years

Discovery Owners Association, Inc.
CELEBRATING DOAI'S TENTH ANNIVERSARY

Portia Williams, Membership Director
P. O. Box 95
St. George, UT 84771-0095

ADDRESS SERVICE REQUESTED

ARE YOUR DUES DUE?
Please renew now!



Driven to Explore

Thank you,
Newsletter Sponsors
and
Advertisers!



Driven By You