

A GOOD TIME COMES IN ALL SHAPES AND SIZES!



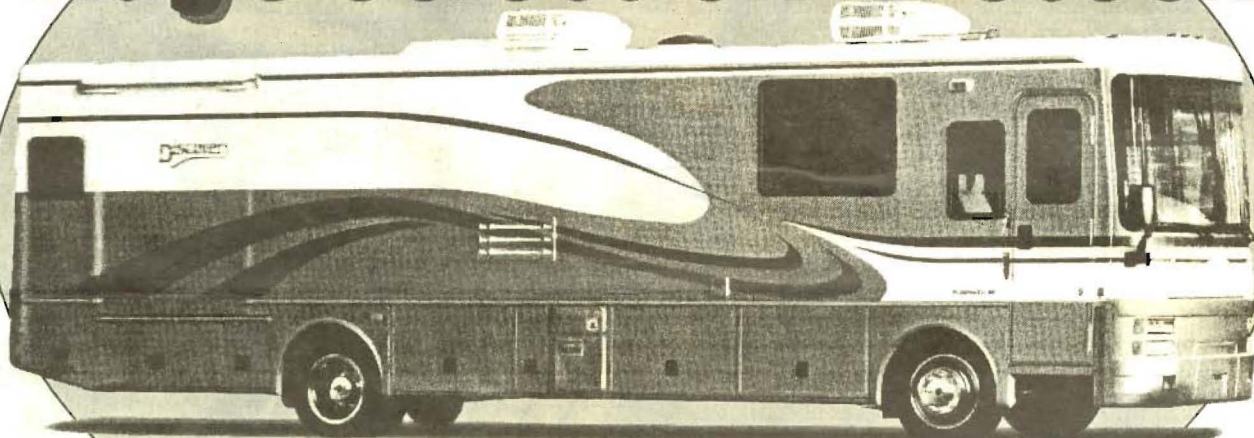


MORE PICTURES ON PAGE 15

DeMontroind

#1 Volume Dealer in Texas! **MOTORHOMES**

Huge Selection in Stock



Discovery

CALL & COMPARE

SIMPLY UNBEATABLE!

14101 N. FRWY (I-45) HOUSTON, TX, 77090

800-392-1480 • 281-872-3845

DISCOVERY-ING NEW IDEAS

Be ready for emergencies by storing a pairs of disposable vinyl gloves in film canisters, and keeping them in the glove compartment, purse, etc..

Increase view in side mirrors by attaching a round convex mirrors on the lower portion.

Prevent diesel fuel from jelling in cold weather by adding STABIL.

Protect windshield wipers from sun damage while parked by covering with foam pipe insulation. Slice open and slide over wipers.

A pull-out basket can be installed under the sink by moving the pipes to one side.

A box to hold a lap-top computer can be fitted under the passenger chair.

Add spice shelves behind the stove, which will be hidden by the cover when raised.

Move the electrical outlet from the front of the kitchen counter to the side, by the window, for easier access.

Patches of door insulation, mounted with sticky tape behind the blinds, will mute rattles.

A spare tire can be carried either under the center of the coach in front of the duals, or in a fabricated metal "well" installed under the right rear propane tank.

Fender vibration can be dampened by adhering aluminum-backed foam with heavy floor contact cement to the inside of the fender.

Deflect cold air from air conditioners by attaching diffusers made with metal or Plexiglas. Use a 2" long tubing to space diffusers from ceiling, using long screws in the existing holes.

Add a purchased handle to the outside of the screen door. Or add a cross bar at chest height to pull or push the screen door.

Keep items from tipping in the medicine cabinet with Plexiglas or doll house "fences", or with a narrow bungee cord, or with plastic wedges cut from a trash can. Narrow baskets sold in Wal-Mart fit as well. Add sheet metal shelves between the existing ones to increase storage capacity.

A shelf can be added under the dash for a tool box, and manila folders, for storing maps, etc., below the instrument panel on the outside wall beside the driver.

Gray water odor while traveling may indicate that the trap for the washer/dryer has dried out. Add water, accessing through the closet.

Move the air brake switch to the side panel for easier access.

Clean gray water probes by adding baking soda, and traveling to slosh it around.

Install a grab bar on the top of the counter in the commode area to aid in getting off the commode. It will also keep articles on the shelf while traveling.

If contents are pushing against kitchen cabinet doors while traveling, put 1" pieces of wood along the front, between the door and the dishes.

The commode on the 34' Discovery can be turned 90 degrees to allow easier access.

Chassis batteries can be mounted on slide out brackets for easier access.

The VCR can be mounted under the TV, freeing up the upper right hand cabinet for other uses.

Prevent wires exposed to moisture from damage by spraying with clear lacquer.

To accommodate shorter people, lower the passenger side chair by installing a pedestal like what is on the drivers side, purchased from Fleetwood.

One member replaced the sofa in his '99 model 36A with a V-Line ice maker, a swivel rocker and a two drawer file cabinet. He also protected the areas beneath the monitor panel and the wall next to the stove with Plexiglas panels, attached with 1/2" screws.

A member put piano hinges on the outer top portions of the surface behind the sofa, for easier access to the storage area below. (Watch out for the long nail from the outside in the corner.)

If caught in very cold weather, add a gallon of cheap vodka to 1/4 tank of fresh water and run through all lines. Keep the front thermostat at 70 degrees and all bins tightly closed.

An air scoop on the engine intake is said to increase mileage by 1 mpg or more.

Install a vent in the lower portion of the bathroom door to facilitate air circulation.

Line cabinets with pieces of indoor/outdoor carpeting - it's quieting, keeps items from moving, and stays in place.

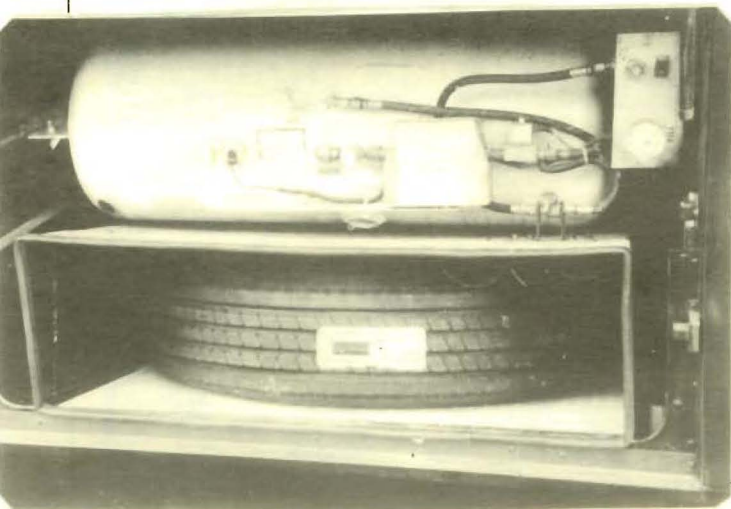
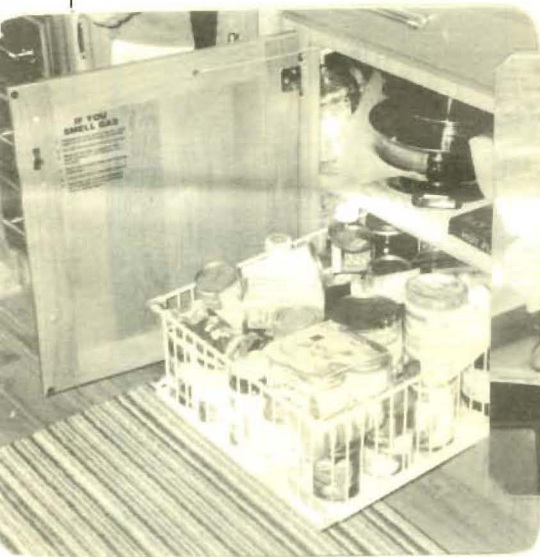
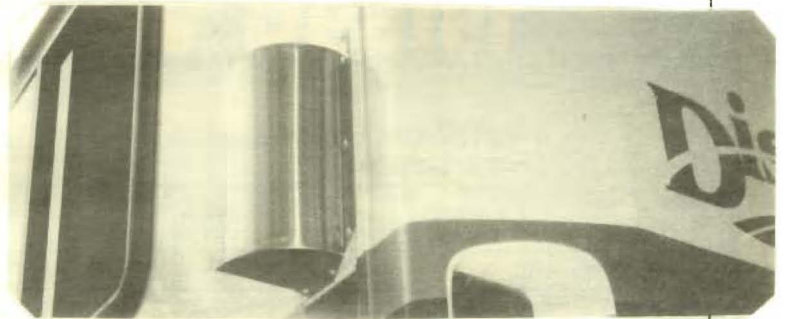
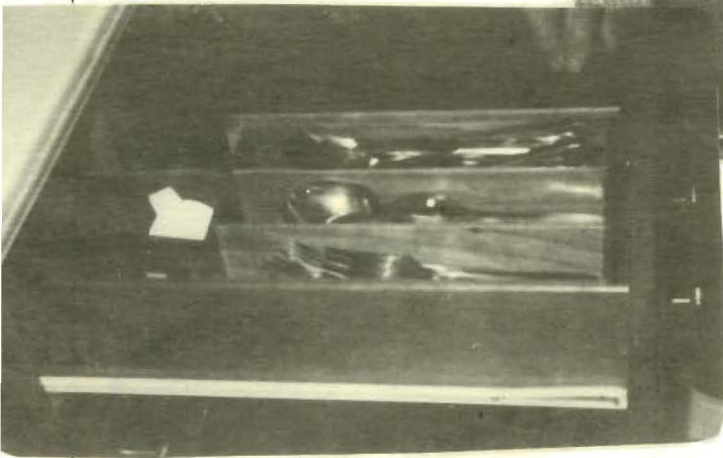
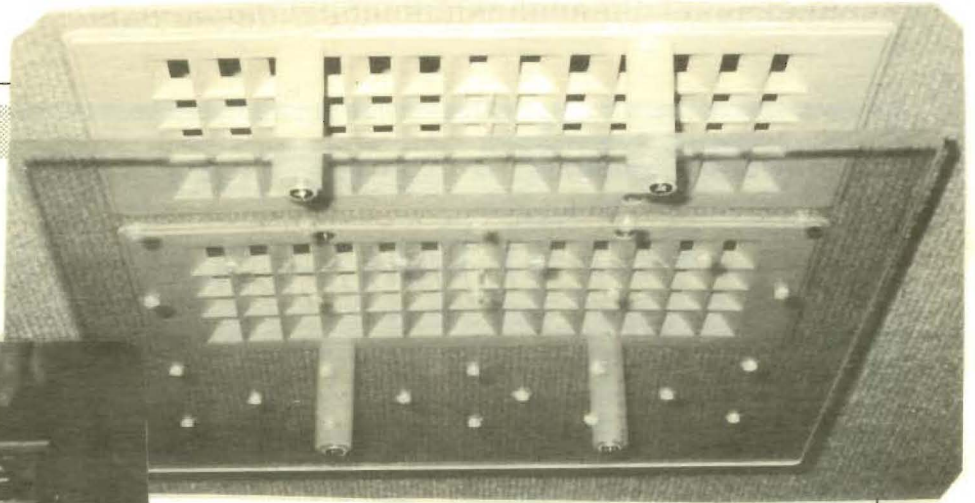
Warm your commode area by rerouting one heat duct from the bedroom by going under the washer/dryer.

If stove flames are showing yellow, clean burner orifices with a toothpick or paper clip.

(See photos of ideas on next page)

7 Discovery Express

PICTURING NEW IDEAS



MICHIGAN'S PREMIER
DIESEL DEALER

DISCOVERY

SALES • SERVICE • PARTS • ACCESSORIES
SANITARY STATION • PROPANE



Jim Riehl's
ROSEVILLE R.V. CENTER
49685 Gratiot Chesterfield MI 48051

800-949-6402

FLEETWOOD WANTS YOUR FEEDBACK!

Please take a moment to help the team at Fleetwood's Product Planning with your valuable insight.
Mail to Larry Chandler, Assistant Product Planning Manager Fleetwood Enterprises, Inc.
2970 Myers St, PO Box 7638 Riverside, CA 92513-7638, or fax to (909) 351-3644.

Model _____ Model Year _____

Ratings: **5** (Best in Class), **4** (Very Good), **3** (Satisfactory), **2** (Not Very Good), **1** (Unsatisfactory)

EXTERIOR FEATURES

INTERIOR FEATURES

	1 BASEMENT DESIGN	2 WASTE SYSTEMS	3 EXTERIOR SKIN	4 OVERALL EXT. DESIGN	5 ROOF	6 GRAPHICS	7 CHASSIS	8 SAFETY FEATURES	9 STORAGE	10 LIGHTING	11 OVERALL DECOR
STORAGE		N/A	N/A		N/A	N/A	N/A	N/A	N/A	N/A	
APPEARANCE	N/A								N/A		
FUNCTION			N/A			N/A					

INTERIOR FEATURES (Cont.)

	12 DRIVING AREA	13 PASSENGER'S STATION	14 LIVING AREA	15 LIVINGROOM SLIDE	16 GALLEY	17 GALLEY SLIDE	18 DINING AREA	19 BATH	20 WARDROBE	21 BEDROOM	22 BEDROOM SLIDE
STORAGE											
LAYOUT											
APPEARANCE											
FUNCTION											

Please rate the overall floor plan: _____. Considering the price, please rate the overall value: _____.

Please indicate what you consider the most important features of your motor home: _____

Please indicate what you would add to your motor home: _____

Please use this space to comment on any of your evaluations, describe how you feel your motor home could be improved, or anything else you'd like to add: _____

THANK YOU!

Before you buy your new **Discovery**...
you owe it to yourself to call

The World's Largest Full-Line Fleetwood RV Dealer

- **Largest Full-Line Fleetwood Selection, including Discovery**
- **Lowest Price**
- **Highest Trade-In Allowance**
- **Nationwide Financing & Delivery**

Beaudry RV • Tucson, AZ



Visit Our New Motorhome Sales Center

CAMPING WORLD

Looking for a Used Discovery...Call for Details

Beaudry RV

www.beaudryrv.com

Tucson, AZ
3200 E. Irvington Road

San Marcos, CA
251 Travelers Way

1-800-284-4878

Association Meeting Held

The Discovery Owners Association, Inc., held its meeting at the rally in Richmond on Saturday morning, at which time the Nominating Committee, appointed in Perry, Georgia and chaired by Bill Smith, presented it's Report and Proposed Interim Organizational Strategy.

The committee's intention was to meet the needs of an organization which has rapidly grown to 850+ Discoverys and their owners. A slate of officers was presented with the Plan. Included in the Plan was a recommendation to raise annual dues to \$36 to cover anticipated expenses such as the newsletter, insurance, member services and support services. A discussion allowed all to voice their opinions.

THREE VOTES TAKEN

Each coach was allowed one vote. The first vote passed with 61 in favor and 56 opposed, counting a show of hands. Because some objected that a table was not included, it was counted a second time and passed with 66 in favor and 65 opposed.

Jim Devine, president, called for a third vote, asking people to stand. By this time some had left the meeting, and the plan and slate of nominees were defeated with 59 in favor and 62 opposed. A member expressed concern that each individual was not allowed his or her own vote. The by-laws now specify one vote per coach, and it was pointed out that the by-laws can be amended for future voting.

A new Nominating Committee was formed on the spot, soliciting volunteers for officer positions. None of the initial nominees participated.

**THE #1
DISCOVERY
DEALER
IN THE
WORLD!**

**CALL FOR
THE LOWEST
PRICES IN
AMERICA!**

Lazy Days RV SuperCenter

WE WILL NOT BE UNDERSOLD ON DISCOVERY RV's!



Lazy Days has committed to selling more **FLEETWOOD** RV's this year than any other dealership... again! Because of our high-volume buying, we can offer you the lowest prices in North America!

With hundreds of motorized and towable **FLEETWOOD** RV's, you're sure to find the one of your dreams here at Lazy Days!

- **UNBEATABLE PRICING**
- **ON-THE-SPOT CREDIT APPROVAL!**
- **LOW, LOW MONTHLY PAYMENTS!**
- **UP TO 240 MONTHS FINANCING!**
- **NO MONEY DOWN** (with approved credit)

CALL TODAY!

1-800-626-7800



A MESSAGE FROM PRESIDENT JIM DEVINE

A dream come true, we had a rally tailored exclusively for Discovery motor home owners, with experts from Fleetwood, Freightliner and Cummins on hand, offering advice and information.

First, I want to thank everyone who attended. Rallies are all about people and each of you helped make this one great! A special thank you to all who volunteered to serve on the various committees and to the team leaders who made it all work.

Fleetwood provided complementary factory service for our coaches as a way of saying thank you. Fleetwood sure has a nice way of saying thanks for buying a Discovery!

We owe a special debt of gratitude to Tom Raper RV for their invaluable assistance in many ways with this rally.

As a young organization, less than two years old, we have achieved far more than would be expected! We are the largest and fastest growing Discovery owners organization. Fleetwood recognizes our association and participates in our national rallies. Our sheer numbers attract attention and assistance from various organizations.

As we approach the end of the year and one thousand Discovery coaches in our association, I am excited about what the future holds for us.

Soon we will have new officers with fresh new ideas. We will also have regional officers to facilitate the gathering of Discovery owners on a local level. As regional rallies are set up, members will have the opportunity to participate in all levels of club activities. Regional officers can communicate to our board what our members want so we can better serve your needs.

In the future, I can see more regional rallies and more involvement of our membership, producing an association we can all be proud to be a part of.

I thank all of you for your support during my presidency; I've enjoyed it tremendously.

Where to Send What

Send all matters of general interest or for action by the President to:

Jim Devine, President
PMB 242
102 Rainbow Dr.
Livingston, TX 77399
(970) 209-4757 jimd@one800.net

Send money, membership applications and renewals and all financial matters to the Treasurer:

Dorothy Devine
(as above)

Send changes of address, membership inquiries and other non-financial matters to the Membership chair:

Dorothy Devine
(as above)

Send problems experienced with your Discovery and any solutions to:

JB Vaughan
303 California St.
Clyde, TX 79510
(915) 893-2625

Send newsletter articles, news, up-coming events, tips and ideas for Discovery rigs temporarily to:

Jim Devine, President
PMB 242
102 Rainbow Dr.
Livingston, TX 77399
(970) 209-4757 jimd@one800.net

Send requests for Discovery Badges to:

Badges "R" Us
PO Box 2040, Roseburg, OR 97470
1-800-426-8395
badges \$4.50, hangers \$3, s/h \$1 ea.

???"WHAT'S COMING UP???"

Rally in Newport Beach, CA, Jan. 9-12, 2000

Newport Dunes Resort -- 75 sites w/full hookups, Cost \$110, Welcome party, farewell dinner included. Seminars: Freightliner, Cummins, A-Weight-We-Go. Wagon Masters: Ted Van Winkle and Dee Harding. Send registration fee to: Discovery Owners Assoc., c/o Sharon Ayer, 91 E. Donohoe, Chula Vista, CA 91911, by 12/9/99. For info, phone 888-594-6818.

Rally in Tampa, FL, Feb. 3-6, 2000

Lazy Days RV Resort -- full hookups, newspaper Cost \$90, Welcome party, daily breakfast and lunch, Farewell dinner included. Seminars: Cummins, Fleetwood and more. Send registration fee to: Discovery Owners Assoc. c/o Joe & Yolanda DeSantis, 8092 Summersong Ct., Spring Hill, FL 34606. For info, phone 888-594-6818.

Elections!

By this time you've probably received your ballot for election of officers for the Discovery Owners Association, Inc., for the year 2000.

Please take a moment to vote and return your ballot. Your participation is needed and valued!

A message from Chet and Dee Harding:

We'd like to apologize to the members of the DOA for not being able to fulfill our duties 100% as officers of the Association due to Chet's major illnesses.

Thanks to all who stepped in and helped out during our absence. We hope that with renewed health, we will get out to meet you in person. Again, thanks so much.

Dee Hardin, Secretary, and husband Chet.

(President's note: the Hardins were one of the three original couples who started the club, and we extend our thanks and best wishes to them.)

DOA WEBSITE NOW ON-LINE!

Go to <http://discoveryowners.virtualave.net> and check out our web site, established by member Bob Cook. Our thanks to Bob for setting this up at no cost to our club; it's cost is covered by advertising banners.

Features include a chat room, for which you need a Java-capable browser. In addition, a list processor, called E-group, allows for communication with other DOA members who have e-mail -- a great way to ask questions of, or make announcements to, the group.

To subscribe, at no cost, go to:

<http://www.egroups.com/subscribe?list=discoveryownersassociation&vcode=132>

To provide Bob Cook with feedback and ideas, contact him at cookrd1@juno.com

WEBMASTER NEEDED!

Now that we are on-line, we are in immediate need of an experienced webmaster to take over responsibility for the website. Ideally, the webmaster would also have land line access to the Internet to minimize communication costs, and be familiar with DMTML, Peri and cgi scripts. Reply to: cookrd1@juno.com.

NEWSLETTER EDITOR NEEDED!

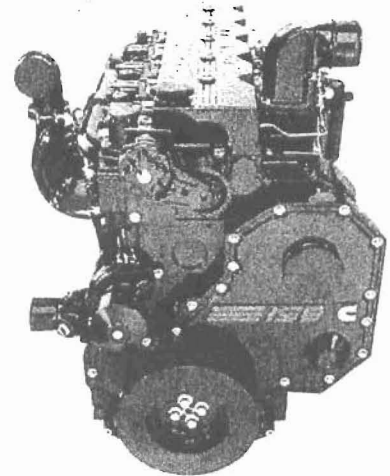
Immediate need for individual to write and publish the *Discovery Express*, newsletter of the Discovery Owners Association, Inc.

To indicate interest, or for more information, contact Jim Devine, Pres., at:

PMB 242
102 Rainbow Dr.
Livingston, TX 77399
(970) 209-4757
jimd@one800.net

Cummins ISB... Home Economics

- Affordable
- Fuel Economy Leader
- Long Service Intervals
- Reduced Maintenance Costs
- Higher Resale Value



Cummins ISB



**THE #1 DISCOVERY
DEALER IN THE
SOUTHWEST!**

**YOU WON'T FIND
A BETTER PRICE
ANYWHERE IN
THE USA
CALL TODAY!**

**OVER \$25 MILLION
IN INVENTORY ON
29 ACRES IN
SUNNY ARIZONA**

EARNHARDT'S RV

#1 FLEETWOOD DEALER IN THE WORLD FROM 1997-1999*

#1 IN THE WORLD IN CUSTOMER SATISFACTION

*You are always at home in an Earnhardt RV
....AND THAT AINT 'NO BULL'*



*Before
You Buy...
Call Us!!*



* On towable units

**2222 East Main St. in Mesa AZ., 85219
Call 480.964.6616 • Toll Free 800.530.8438
Ask for our Telemarketing Department
Come visit us at www.earnhardtrv.com**

DISCOVERY OWNERS ASSOCIATION, INC.

Welcome to an organization open to *all* owners of Discovery Motorhomes by Fleetwood, intended to foster social opportunities and information exchange among members.

Dues are \$20 for the first year, and \$16 each year thereafter, due in the initial month joined.

Mail with checks, payable to: Discovery Owners Association, Inc., to: Dorothy Devine, Membership, PMB 242, 102 Rainbow Dr., Livingston, TX 77399.

.....

LAST NAME _____ FIRST _____ SPOUSE _____

Street _____ City _____ State _____ Zip _____

Phone _____ Cell phone _____ E-mail _____

Discovery: Year _____ Length _____ Slide? Yes ___ No ___ Full Time _____ Part Time _____

Travel/Motor Home Memberships: _____

Hobbies/Interests*: _____

Areas of Expertise/Background*: _____

Positions in Discovery Owners Association, Inc., of possible interest to you*: _____

Indicate willingness to participate as a volunteer if called upon*: Yes _____ No _____ Activities of

particular interest : _____

What are you looking for from this organization? _____

Comments: _____

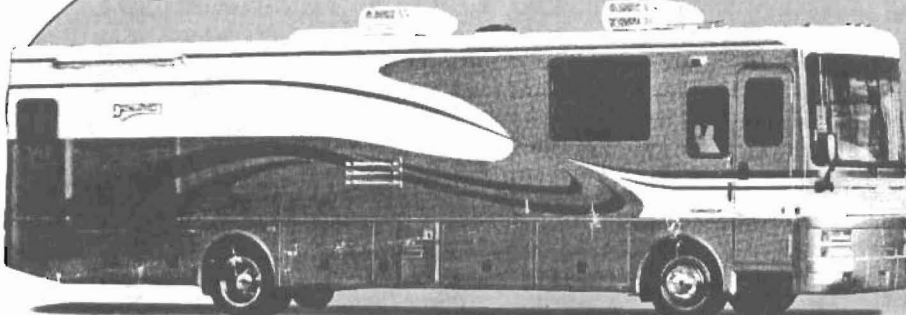
*indicate which family member if appropriate



DeMontroond

#1 Volume Dealer in Texas! **MOTORHOMES**

Huge Selection of DISCOVERYS in Stock



**CALL &
COMPARE**

800-392-1480 • 281-872-3845

DeMontroond
#1 Volume Dealer in Texas! **MOTORHOMES**

SIMPLY UNBEATABLE!

14101 N. FRWY (I-45) HOUSTON, TX, 77090

Discovery Owners Association, Inc.
Dorothy Devine, Membership
PMB 242, 102 Rainbow Dr.
Livingston, TX 77399

Support Our Advertisers -They Support Us!